



# Bhuvan

## *Geo-platform of ISRO*

Kalyan Deep K,  
BWSD, BG&WSG,  
NRSC



1

Visualization Platform



7

Platform for Disaster Support



6

Platform for Mapping



2

Platform for Free Data Clearing House



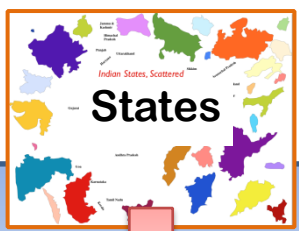
3

Platform for Building User Applications



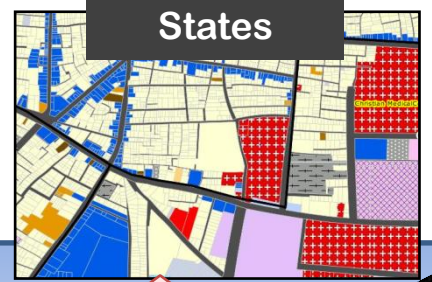
4

Platform for States To Share data

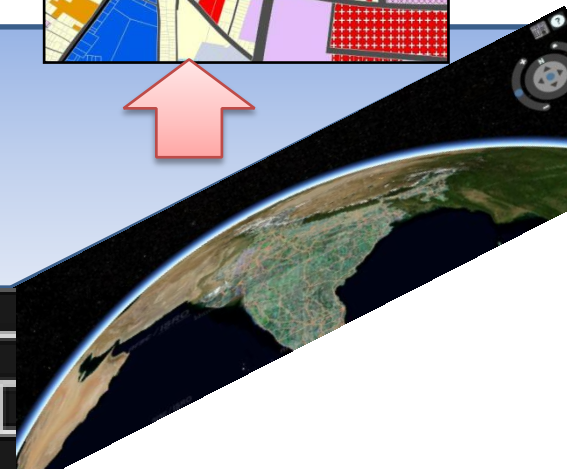


5

Applications For States



**Bhuvan Geo-Platform**





# BHUVAN – Homepage

----- Visualisation & Free Download -----

<b>Bhuvan-2D</b>	<b>Bhuvan-3D</b>	<b>Open Data Archive</b> <i>Free Download</i>	<b>Climate Environment</b> <i>EO derived Products</i>
------------------	------------------	--	--

----- Maps & OGC services -----

<b>Thematic Services</b>	<b>Disaster Management Support Services</b>	<b>Ocean Services</b>	<b>Create a Map / GIS</b> <i>My.Maps   My.GIS</i>
--------------------------	---	-----------------------	--

**Governance/Central Ministries** **g-Governance Dashboard**

<b>irid</b>	<b>Watersheds</b>	<b>Urban Survey</b>	<b>Postal</b>	<b>Monuments</b>	<b>Chaman</b>	<b>Hailstorm</b>	<b>PMKSY</b>	<b>CI</b>
-------------	-------------------	---------------------	---------------	------------------	---------------	------------------	--------------	-----------

**Application Sectors**  
*Collaborative applications - Platform to share your data and create governance applications*

<b>Agriculture</b>	<b>Forestry</b>	<b>E-Governance</b>	<b>Water</b>	<b>Tourism</b>	<b>Urban</b>	<b>Rural</b>
--------------------	-----------------	---------------------	--------------	----------------	--------------	--------------

**Rural**

<b>Ground Water</b>	<b>Watersheds</b>	<b>MGNREGA</b>
---------------------	-------------------	----------------

**Special Applications**

<b>Data Discovery</b>	<b>Decision Support Dashboard</b>	<b>Hydrological Products</b>	<b>Image Gallery</b>
<b>International Disasters</b>	<b>Multilingual Translation</b>	<b>Online Shapefile Creation</b>	<b>OSCAT-3D</b>
<b>Smart Tracking</b>	<b>Suvidha</b>		

## State Portals/Applications (Click on any State)



State

ANDHRA PRADESH



Andhra Pradesh



Asset Mapping

Visit State Portal of ANDHRA PRADESH

Updates

Download

- **Bhuvan applications for COVID-19 India** - Geo viz & Dashboard; Citizen Reporting and Officer Reporting; Mobile Rythu Bazar Tracking; Home Quarantine Tracker - Narayanpet Dist; Annapurana Meal centres - Hyderabad; Amma Unavagam - Chennai; Bihar Health **New**
- Tripura Forest Plantation Monitoring **New**
- g-Governance: Dashboard

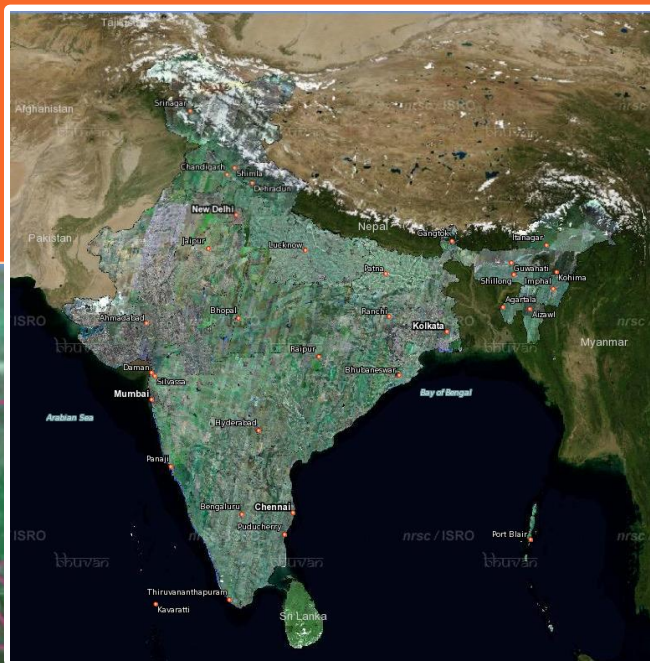




# Data Visualisation



# Visualization : National to Local up to Cadastre













# Time-lapse 2010-2015

# Mumbai T2

**Bhuvan**  
Indian Geo-Platform of ISRO

Welcome User [Login](#) [En](#) [Hi](#) [Ta](#) [Te](#)  
National Remote Sensing Centre

[Tools](#) | [Updates](#) | [Bhuvan Store](#) | [Link](#) | [Help](#) | [Bhuvan Collaborators](#)

Mumbai, Mumbai City, Maharashtra

Map | **Satellite** | Hybrid | Terrain | More

Chhatrapati Shivaji International Airport  
Sahar Elevated Road  
Elevated Road  
MTHL Road  
Samhita Industrial Area  
Loha Karkhana  
Thriarr Polymers Pvt Ltd  
Parekh Industries Ltd  
Kitchen Equipment Pvt Ltd  
East West Industrial Centre  
Memco Industrial Estate  
Maxus Mall

**Available Datasets**

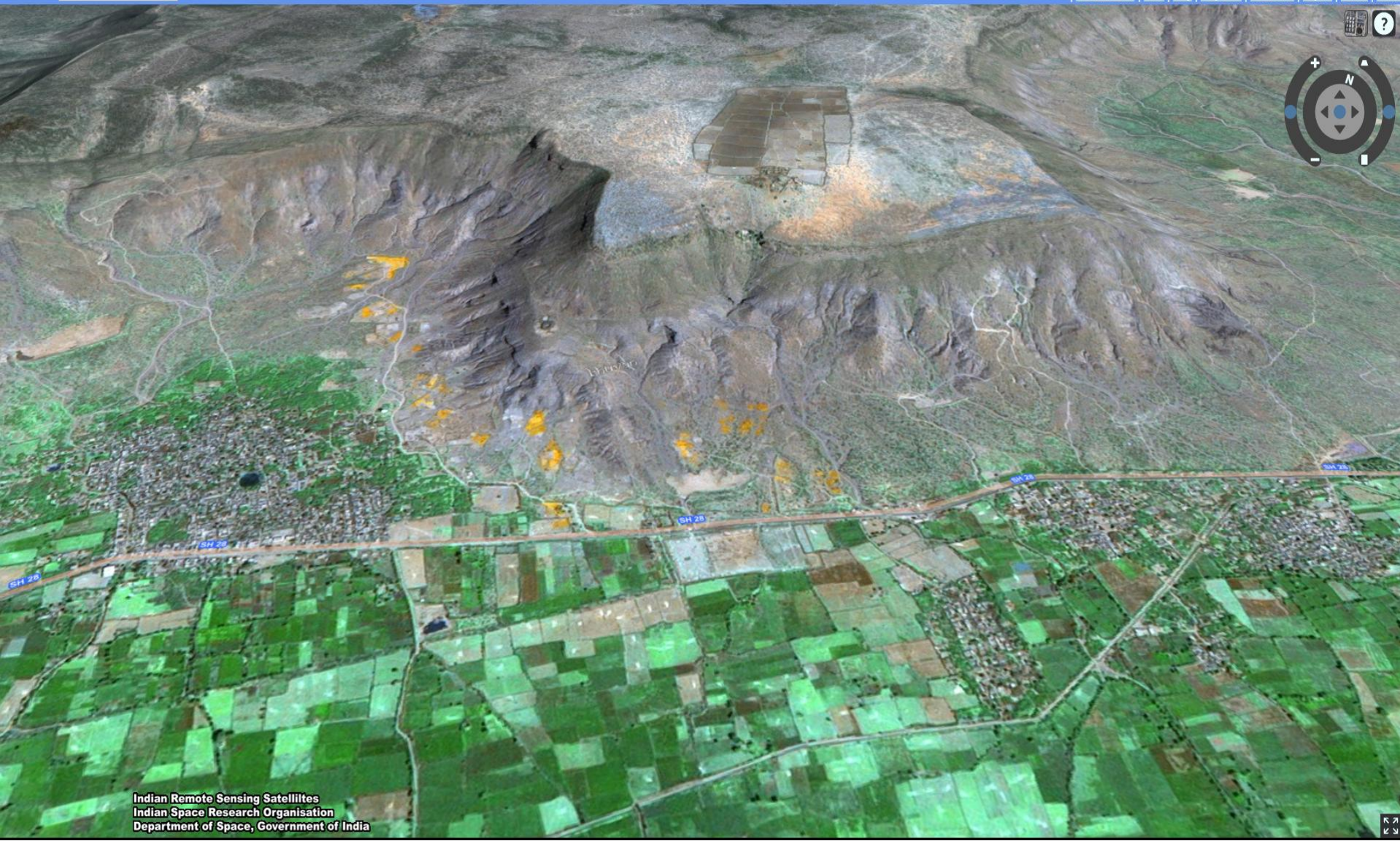
- 09APR2014
- 1979
- 1979-04-06
- Base Data
- 2009-10

100 m

Bhuvan 72.88, 19.10

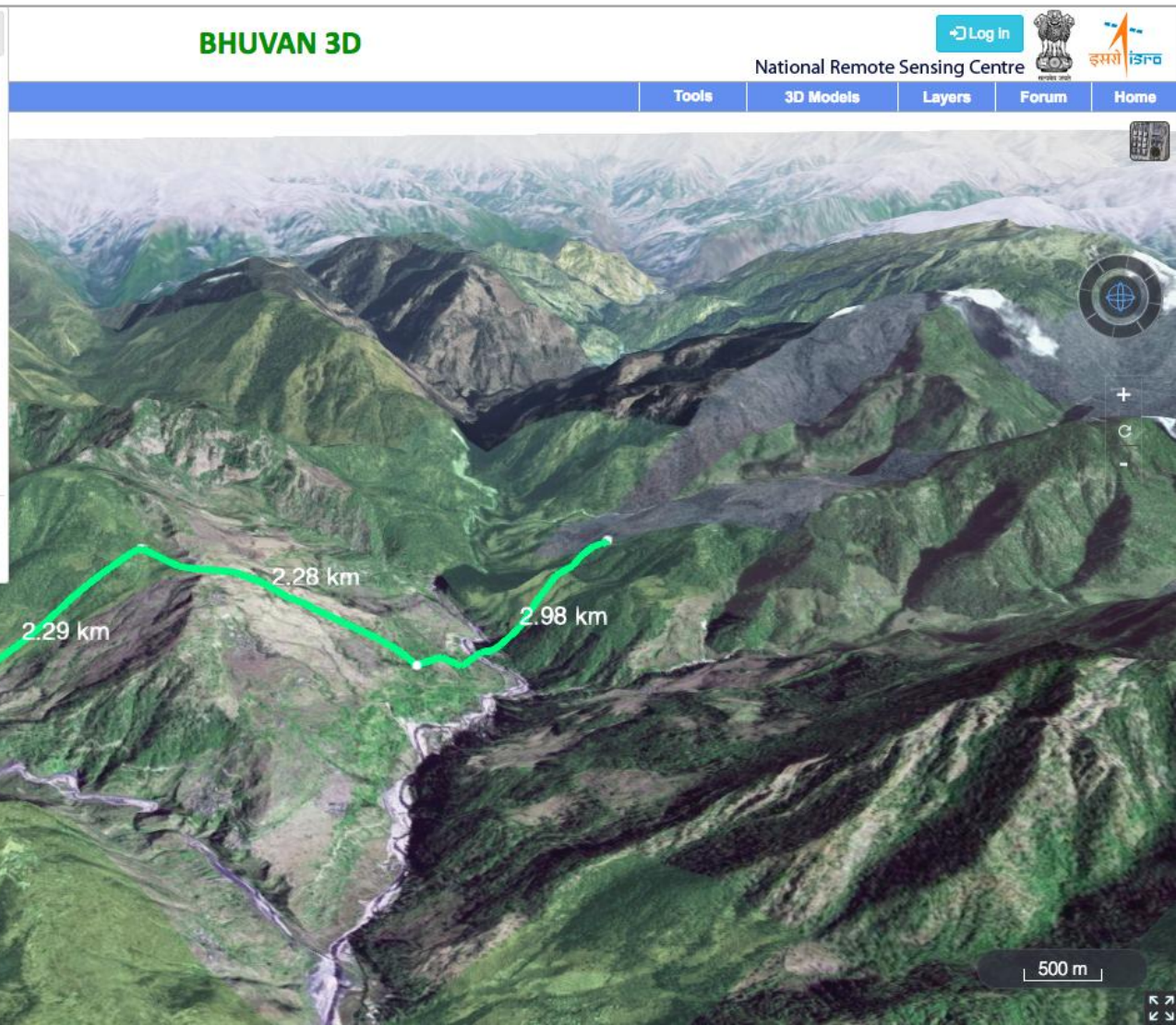
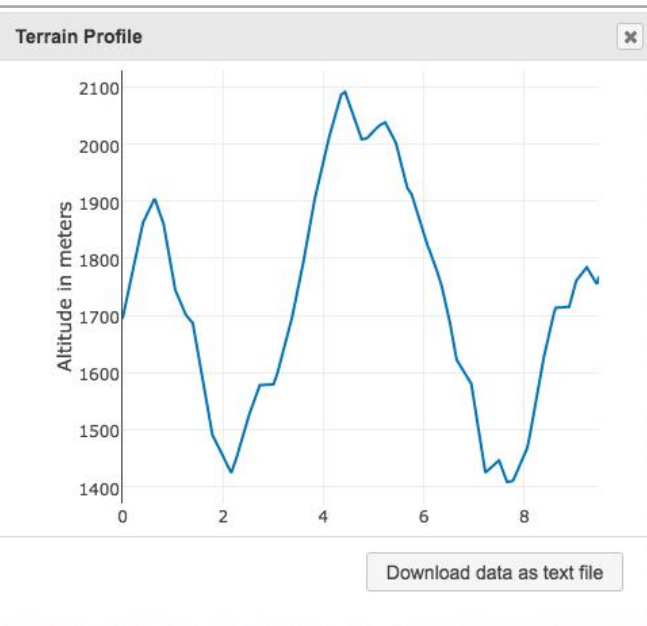


# Bhuvan-3D





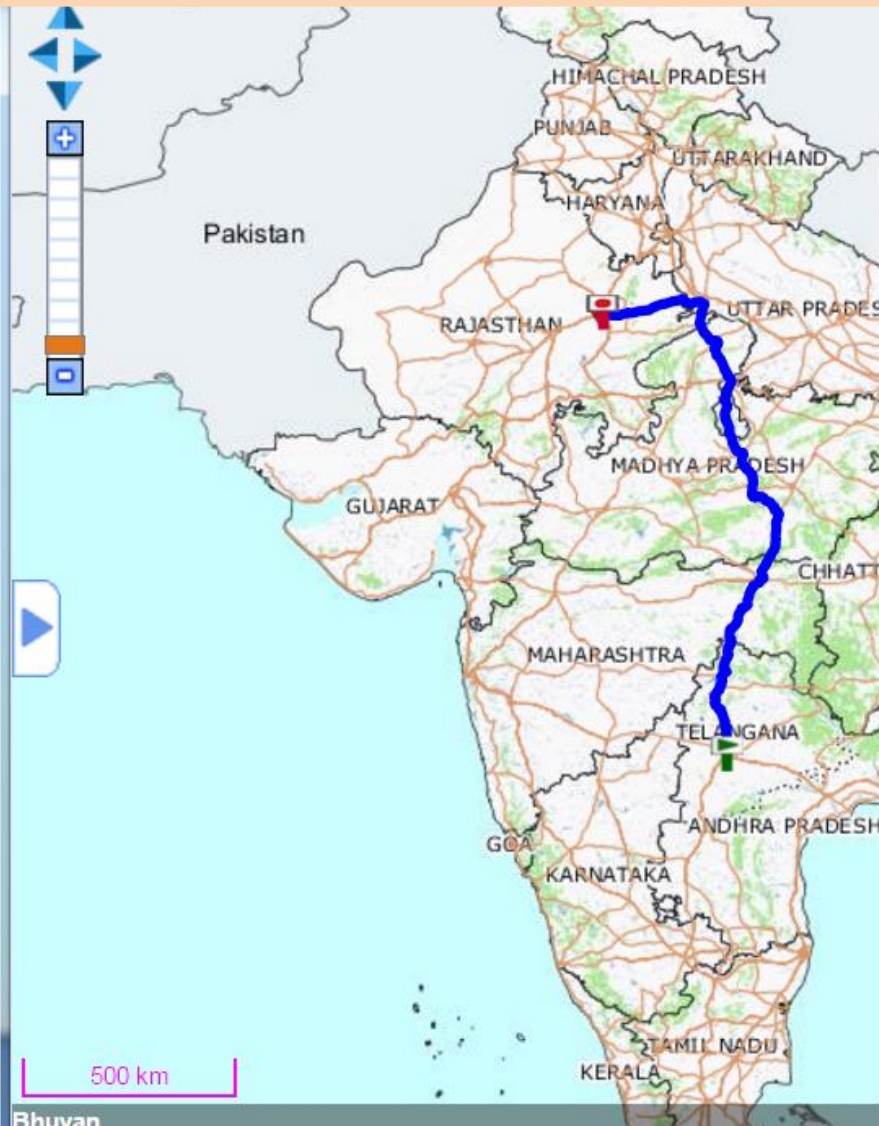
# Bhuvan-3D – Terrain Profile







# Road Network and Navigation



Map | Satellite | Hybrid | Terrain | More

## Get Directions

Start points:

Via points (optional):

Destination points:

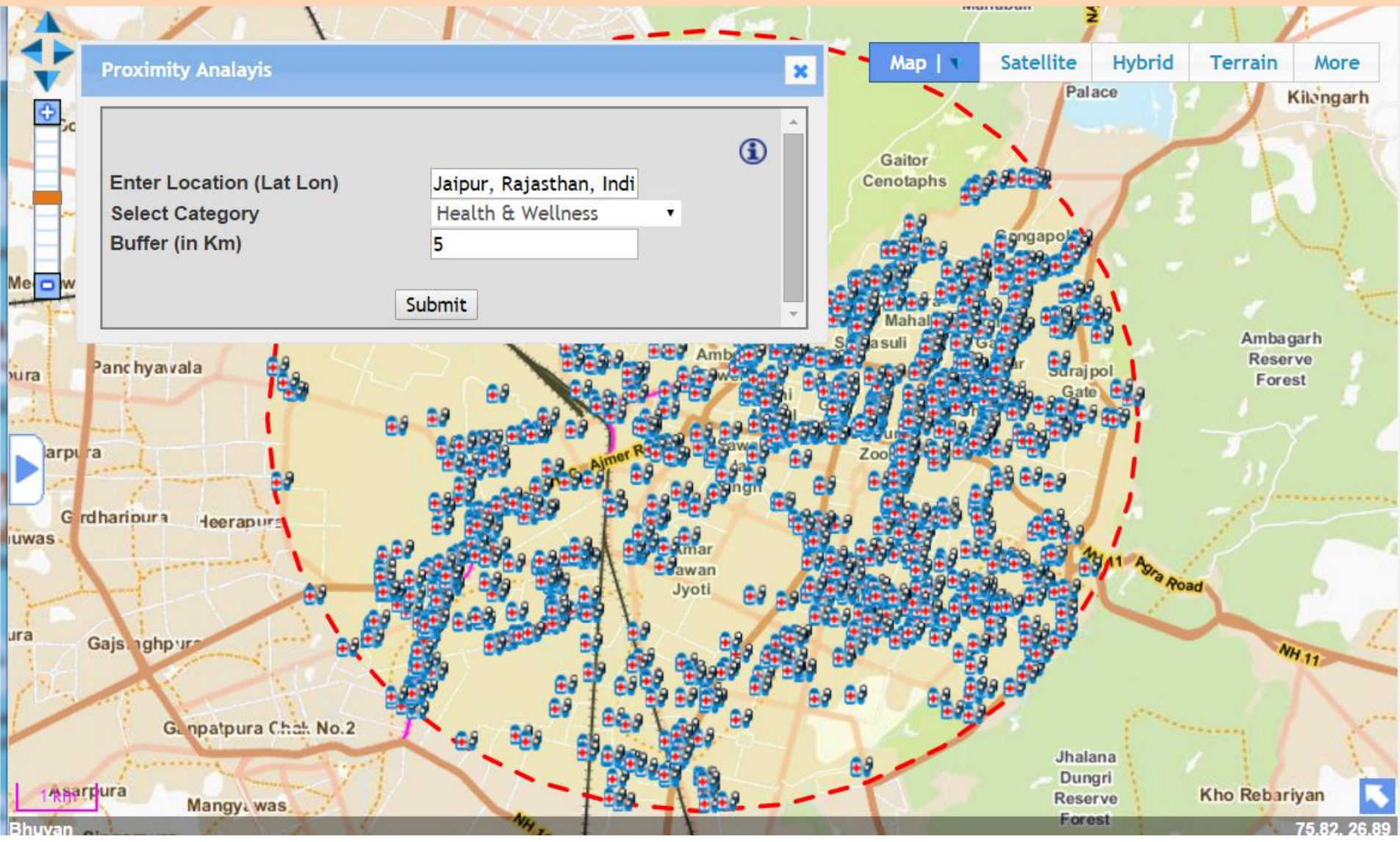
Route type:

Route 1	Route 2	Route 3
33 hrs 34 min	34 hrs 33 min	37 hrs 57 min
1563.1 km	1440.2 km	1561.8 km

- Route 1
- ← Head west on Jawaharlal Nehru Road towards Jawaharlal Nehru Road. Go 24 mts
  - ↘ Make a **sharp right** turn at NH 7. Go 173 mts
  - ↗ At the fork **bear right** onto NH 7 using one of the 2 rightmost lanes. Go 1.1 km



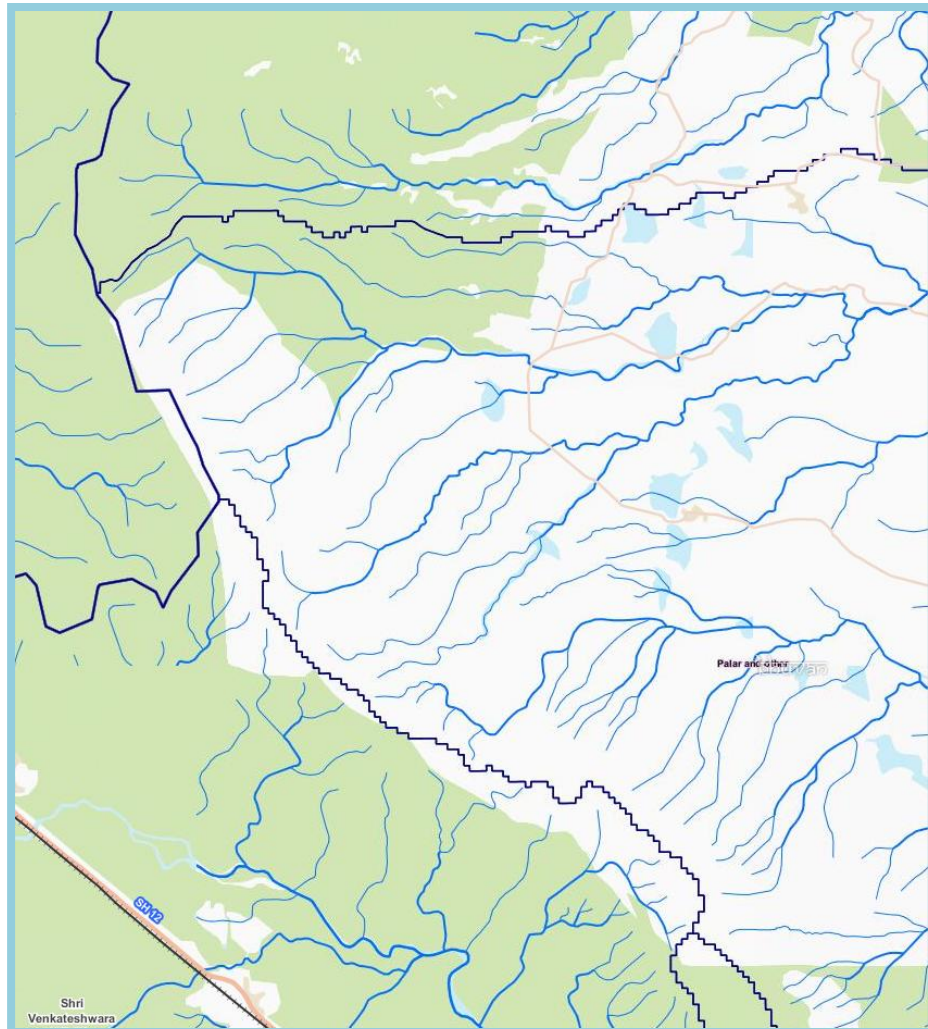
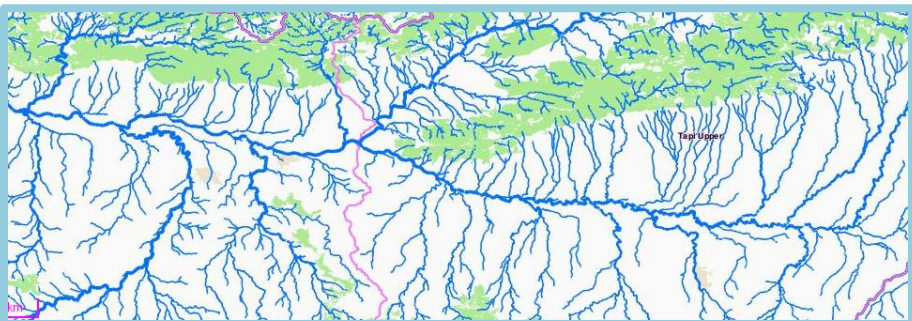
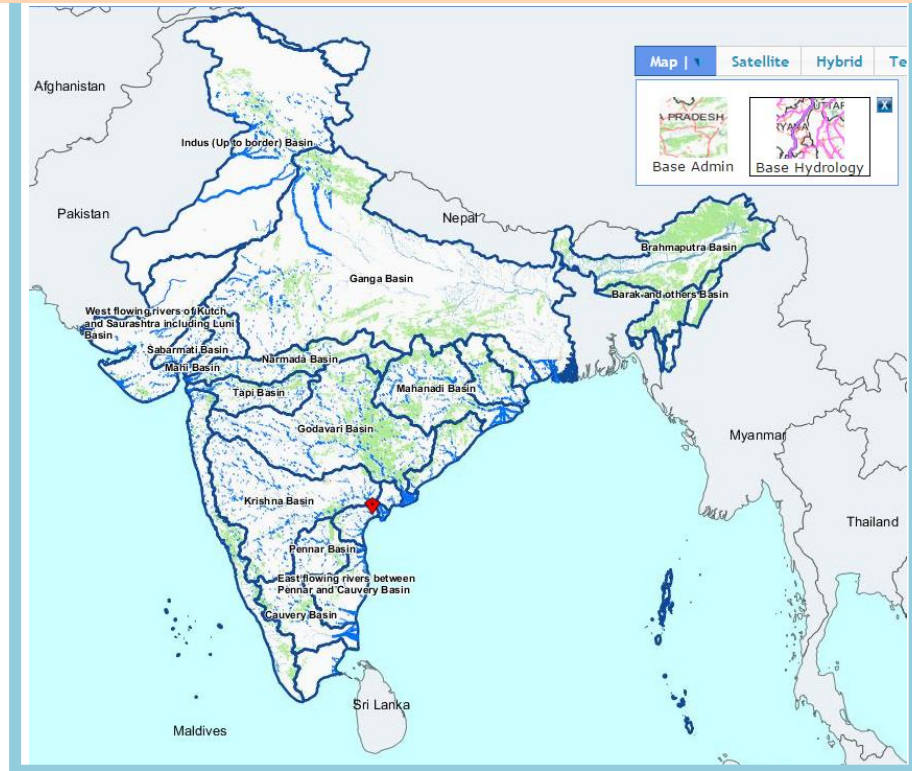
# Points of Interest with Neighbourhood





# HYDROLOGIC BASE

## River Basins to Micro-watersheds

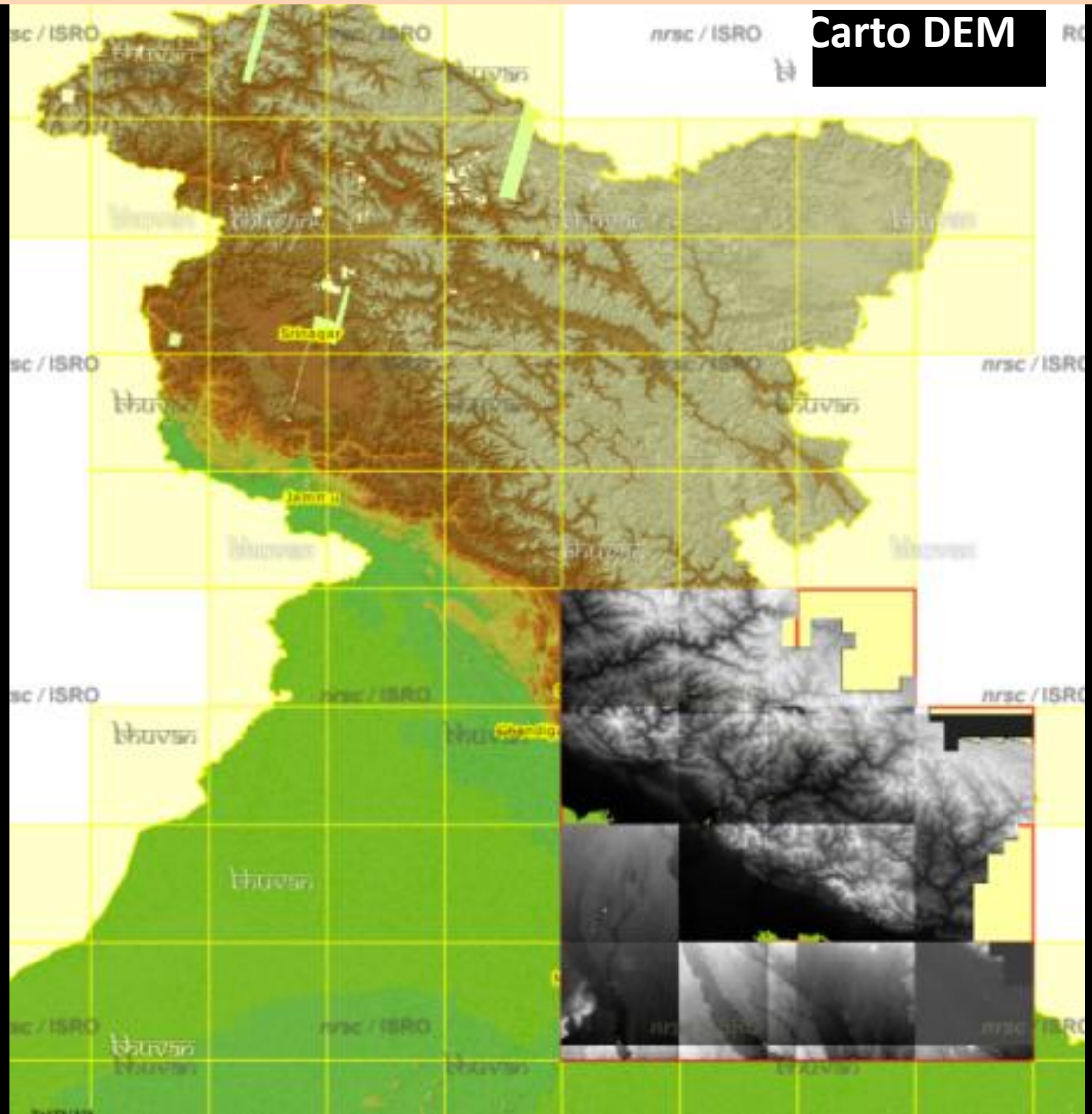
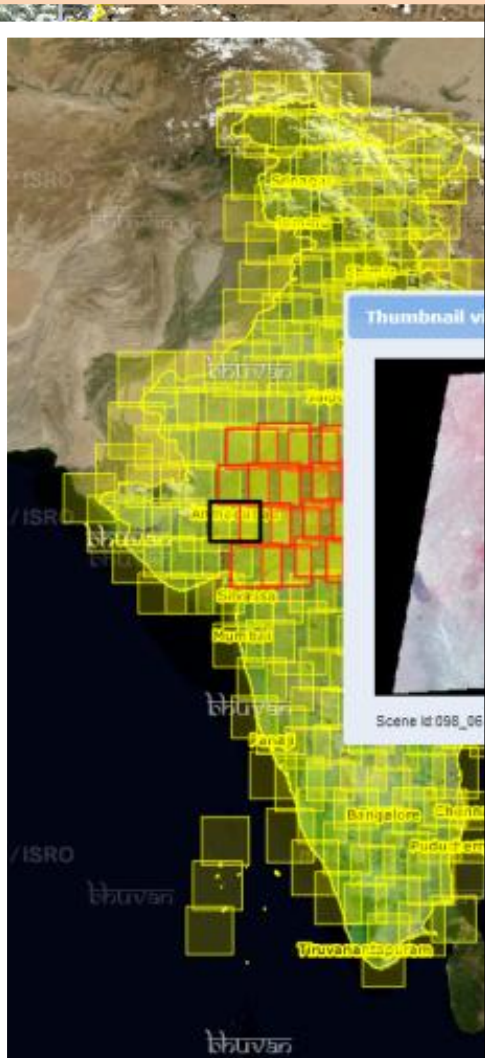




# Data Downloads & Thematic Services



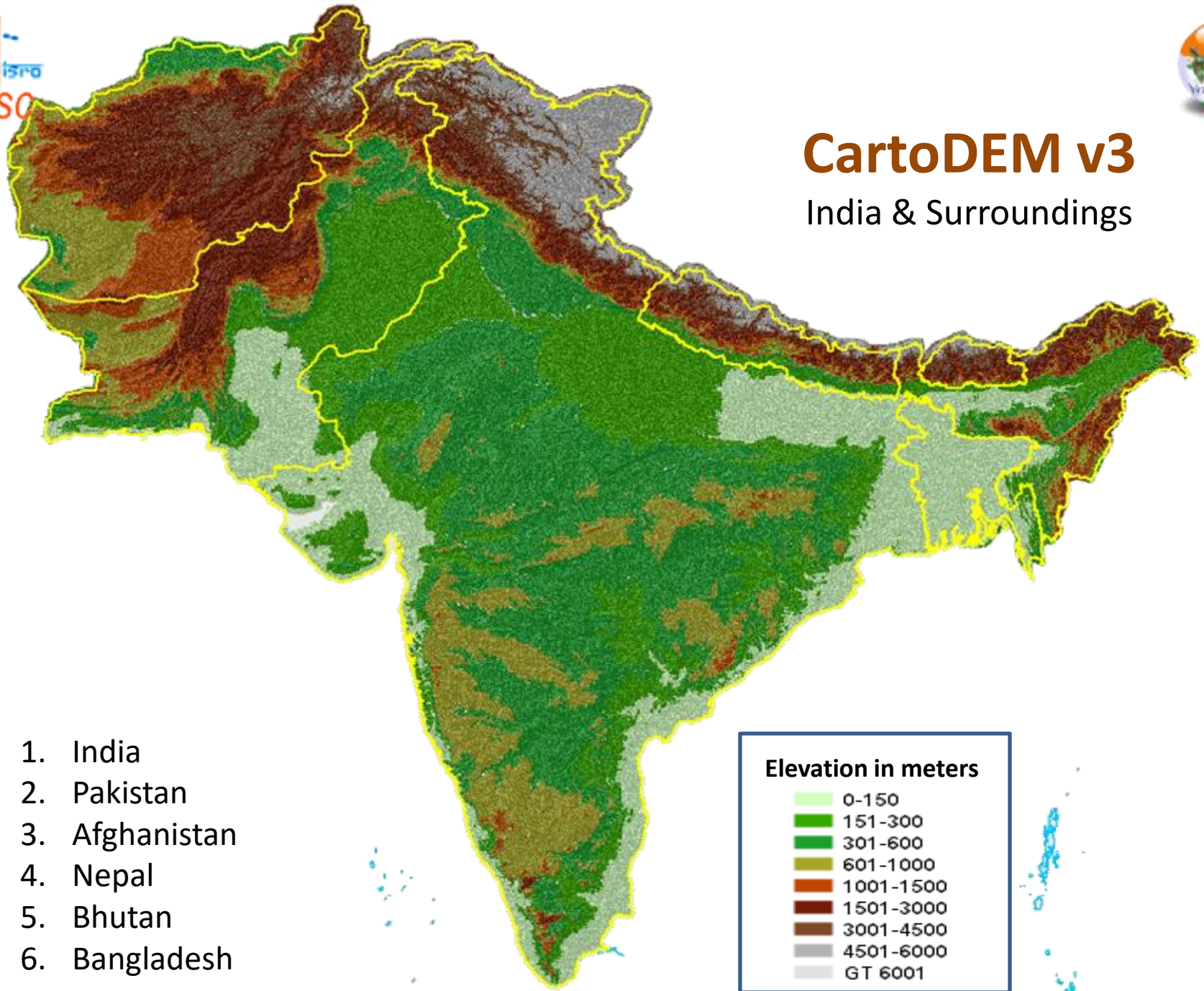
# Satellite Data & Derived Products





# CartoDEM v3

India & Surroundings





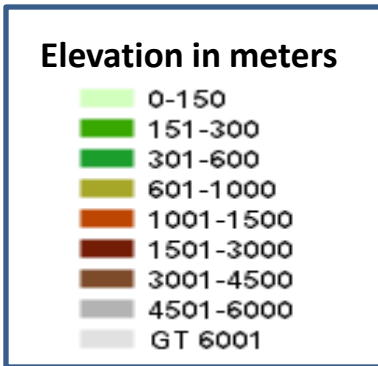
Afghanistan



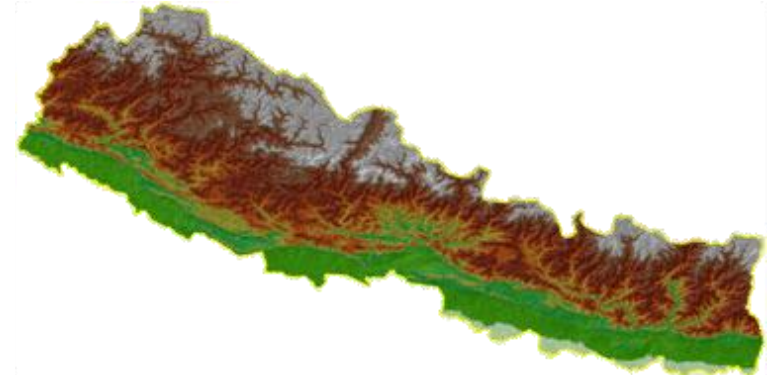
Pakistan



Bhutan



Bangladesh

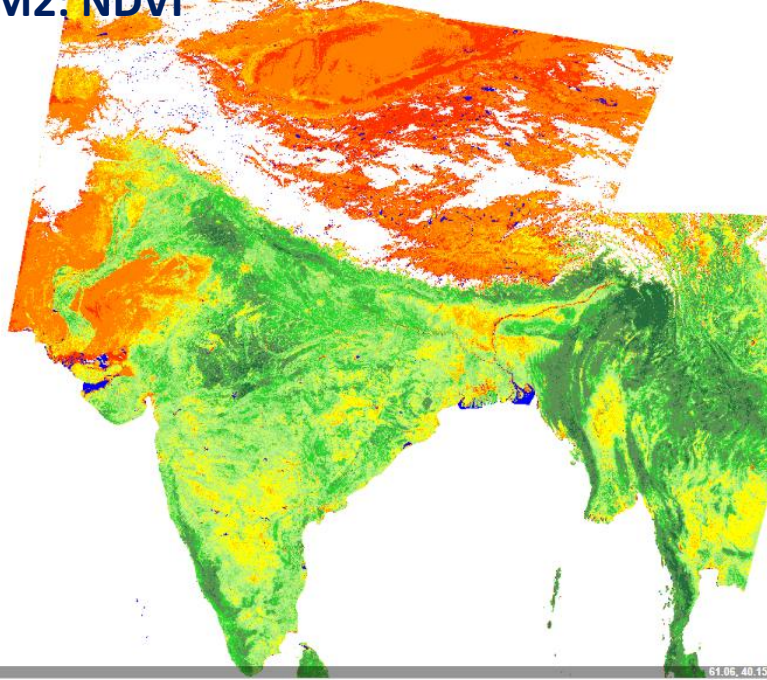


Nepal

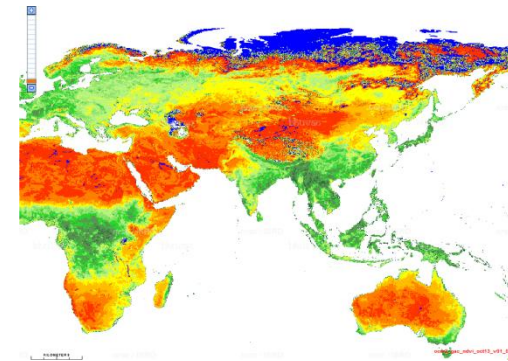


# NOEDA: National Information System for Climate and Environment Studies (NICES)

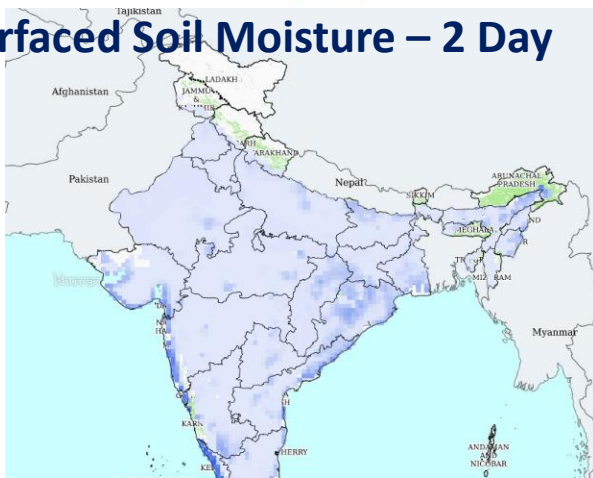
## OCM2: NDVI



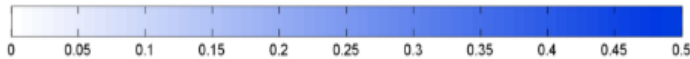
## AWiFS: Water Bodies fraction



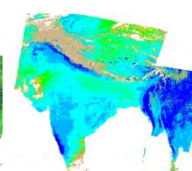
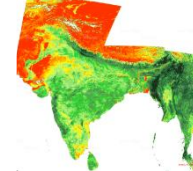
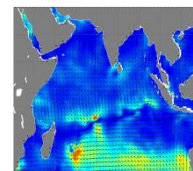
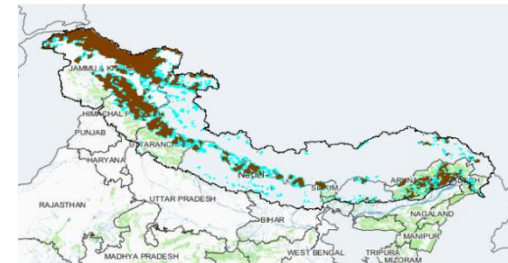
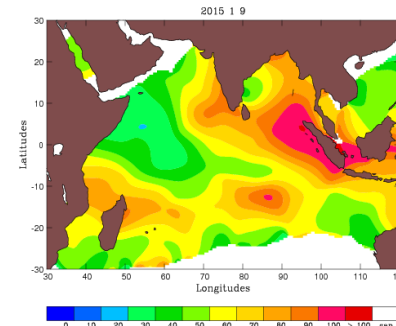
## Surfaced Soil Moisture – 2 Day



Surface Soil Moisture (m<sup>3</sup>/m<sup>3</sup>)



## TCHP (kJ/cm<sup>2</sup>)

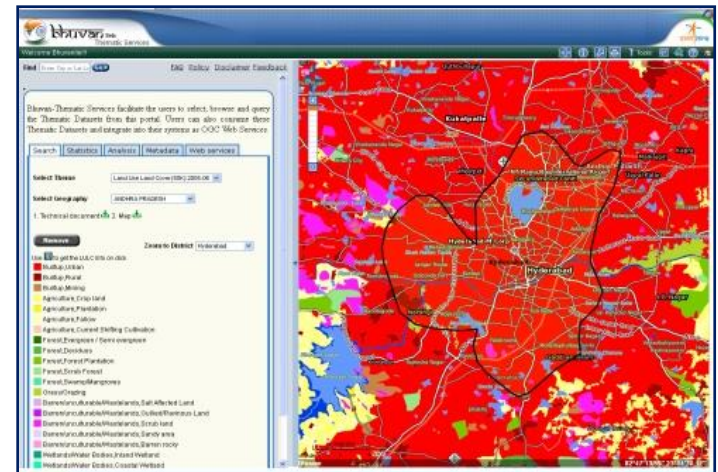
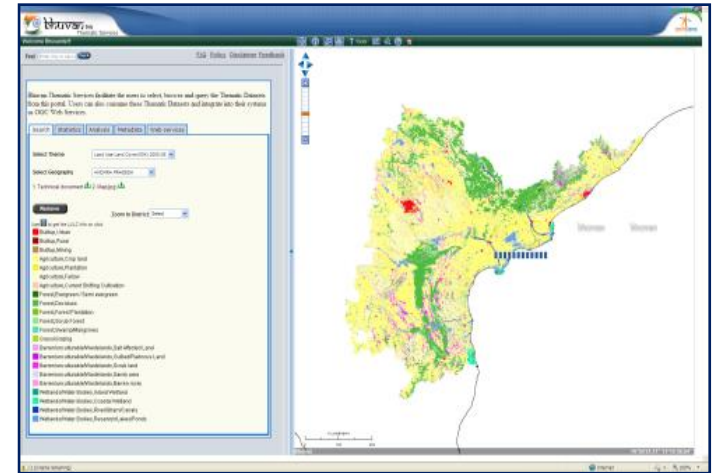


# Thematic Services

## “OGC Web Services (WMS, WMTS) towards interoperability”

Bhuvan-Thematic Services facilitate the users to select, browse and query the Thematic Datasets from this portal. Users can also consume these Thematic Datasets and integrate into their systems as ‘OGC Web Services’.

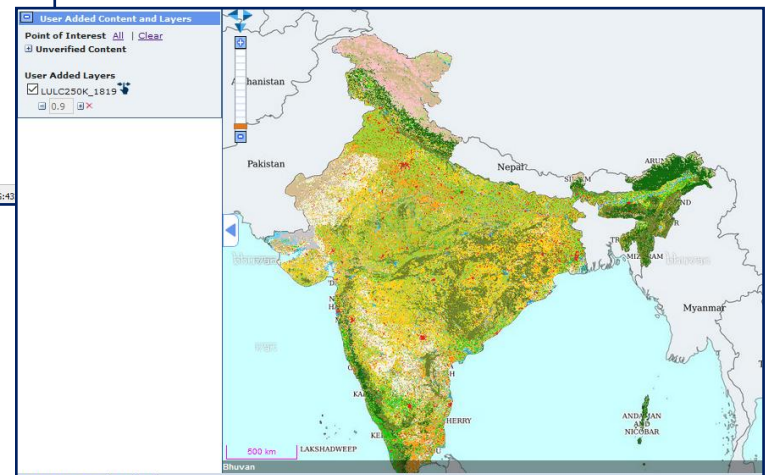
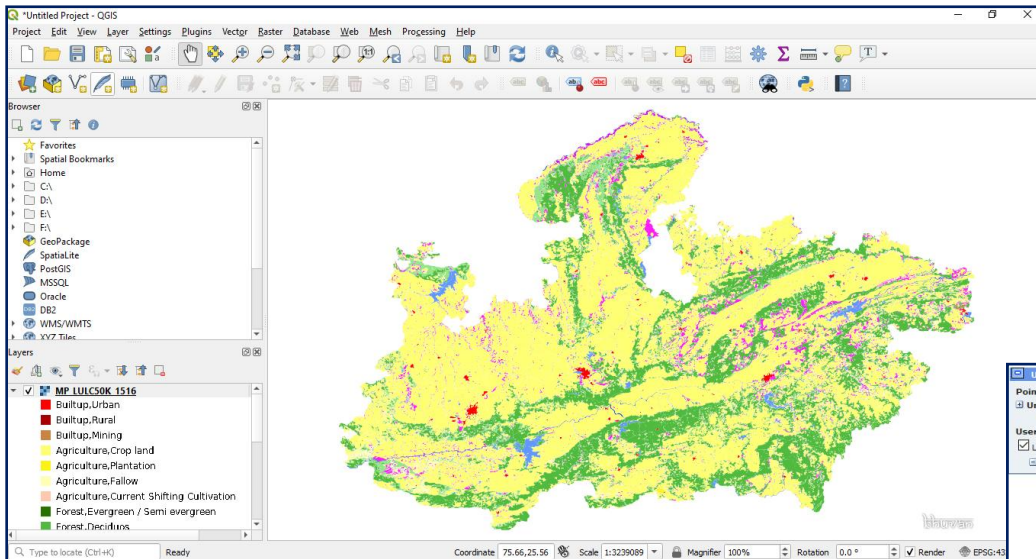
- Land Use Land Cover -50 K (2005-06, 2011-12, 2015-16)
- Land Use Land Cover -250 K (14 Cycles : 2005-06 to 2018-19)
- Land Use Land Cover -10K
- Urban Land Use: 10K
- Wasteland: 50K (2008-09)
- Geomorphology:50K (2005-06) & Lineament: 50K
- Erosion :50K (2005-06)
- Salt Affected and Water Logged Area :50K (2005-06)
- Urban Sprawl
- Water bodies
- Flood Annual Layers (1998 to 2010) – Assam & Bihar
- Flood Hazard Layer (1998-2007) – Assam ,Bihar & Orissa
- Metadata NSDI 2.0
- Analysis, Statistics, Web services, View based Print, Add WMS Layer, Clip & Ship





Bhuvan services are OGC compliant such as WMS (Web Map Service) and WMTS (Web Map Tile Service) towards Interoperability.

Web Map Tile Service (WMTS) and Web Map Service (WMS) for consumption through OpenLayers, Mapping Libraries and GIS Software's QGIS, uDig, ArcGIS and Other Users.



# DISASTERS : Near Real Time Support

**Cyclone**

**Flood**

**Landslides**

**Forest Fires**

**Earthquake**

**Droughts**

- **Historical Floods**
- **Flood Annual Layers**
- **Flood Hazard Layers**
- **Daily Forest Fires**
- **Drought with Indices**
- **Landslide Inventory**
- **Landslide Early Warning**
- **Hydrologic Processes**



**Landslide**

**Early Warning System**

**Experimental Landslide Early Warning System for Rainfall Triggered Landslides**

Route

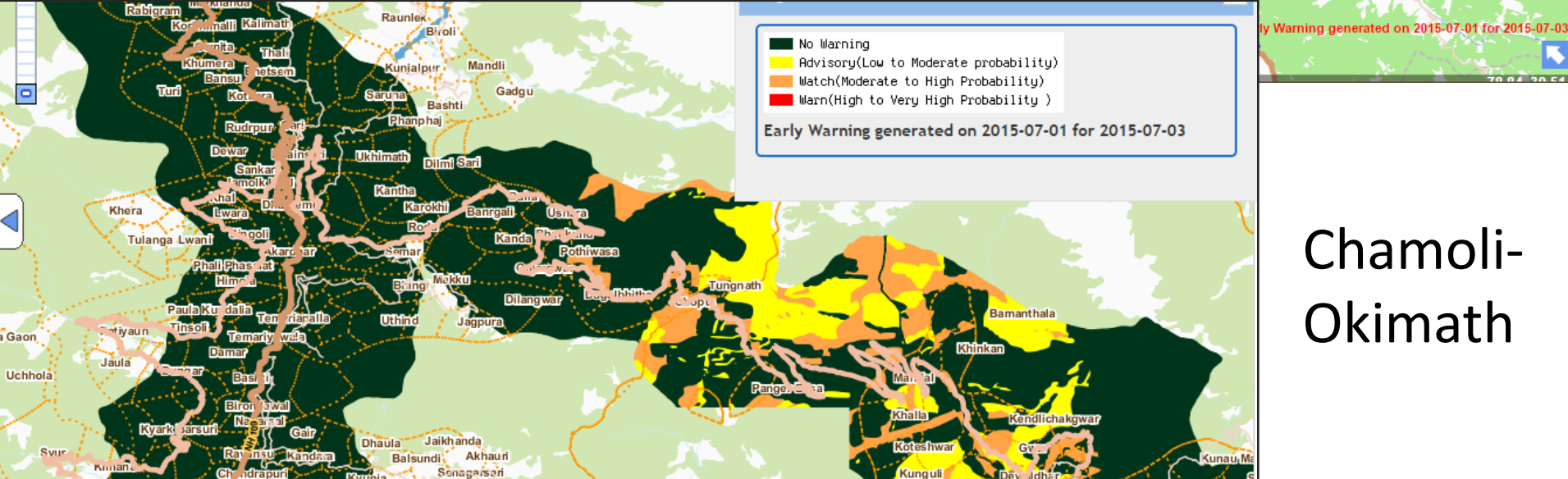
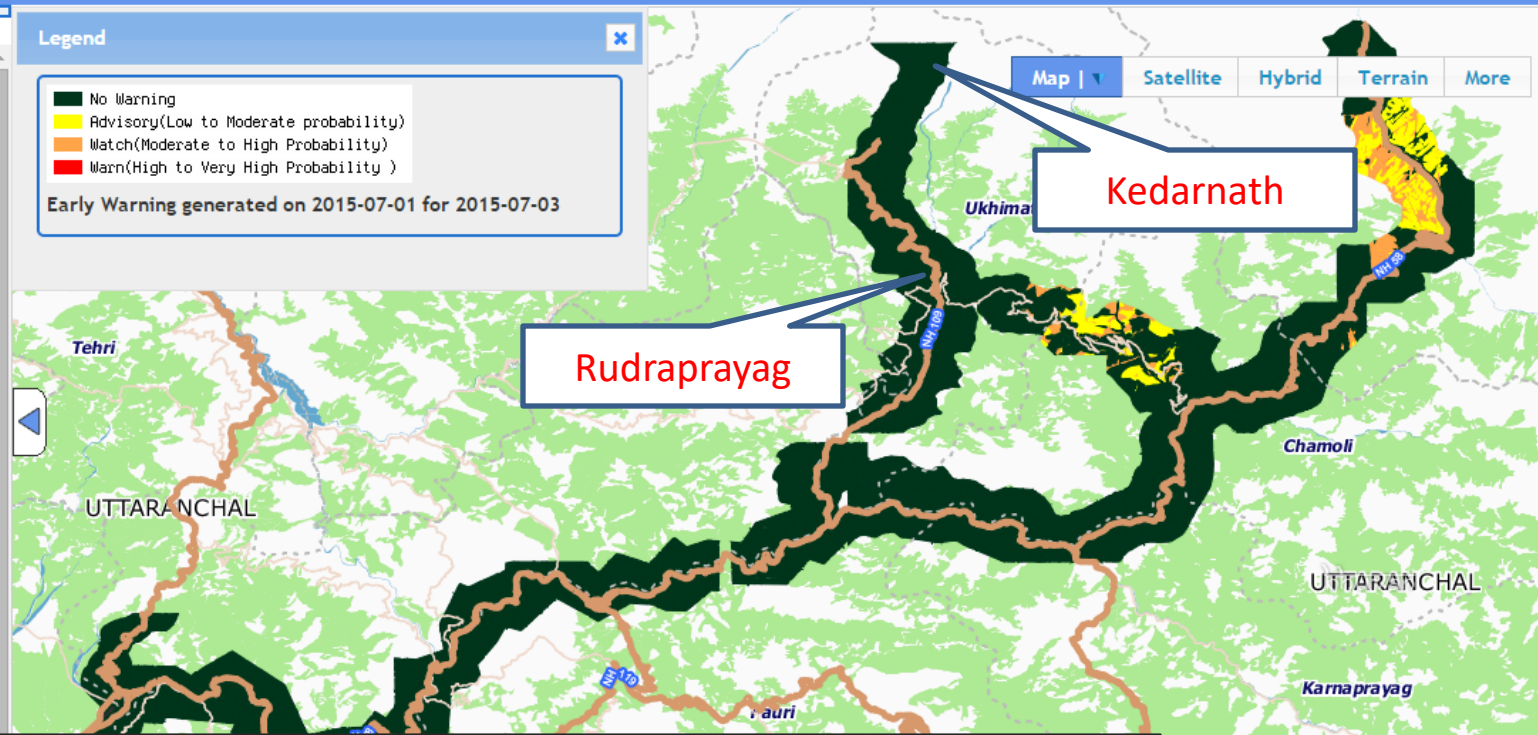
Date 2015-07-03

Technical document

Please Click on Map to get the rainfall value (3' X 3' Grid)

**For Animated view**

[Disclaimer](#) [Credit](#) [Legend](#)





# Disaster Management Support

File Edit View History Bookmarks Tools Help

Welcome to Online Ordering 5... Welcome to Bhuvan | ISRO's ... Indian Earth Observation Visu...

bhuvan-noeda.nrsc.gov.in/disaster/disaster/disaster.php#

**bhuvan**  
Gateway to Indian Earth Observation

**Disaster Services(NDEM Public)**

Enter City or Lat,Lon(ex:chennai or 12.9716, 77.6144)

[Cyclone](#) | [Drought](#) | [Earthquake](#) | [Flood](#) | [Forest Fire](#) | [Landslide](#)

Cyclone NILOFER  
Cyclone HUDHUD  
Track  
Quick Mobile Survey  
Crowdsourced Data  
Inundation  
Forecast  
Spatial Overlay  
Additional Layers

Mobile Towers Affected  
 BSNL Total Mobile Towers  
 Total Substations  
 Substations Affected

Legend

Share Field Data [New](#)

Support for International Disasters

For any Technical Queries Please Contact : 040 - 45679688

**HUDHUD DAMAGE ASSESSMENT & RELIEF MONITORING SYSTEM**  
Government of Andhra Pradesh

Home Circulars & Go's Gallery Downloads Media Releases Skilled Worker Tracking Telecom Status Power Status Helpline Numbers

Department Login  
Username Password LOGIN

Updates  
The Hon'ble CM has made an aerial survey of the affected areas & directed all the officials to ensure quick relief operations.  
The chief minister has enhanced the relief package to the cyclone victims for human loss, crop damages, house damages etc....  
41 IAS officers are positioned to oversee the relief

**ABOUT HUDHUD CYCLONE**  
Cyclone Hudhud pounded the coastal districts of Andhra Pradesh and Odisha with heavy rain and winds of almost 200 kmph on Sunday leaving a trail of devastation with Visakhapatnam where the very severe storm made landfall bearing the brunt.  
Lakhs of people have being evacuated from towns and villages through which the cyclone has passed amid massive rain and wind. The cyclone is similar to last year's Phailin that crossed the Odisha coast leaving behind a trail of destruction.

Citizen Inputs  
**Maps (Bhuvan)**  
CM Relief Funds  
Gratuitous Relief Update

**Sri N. Chandrababu Naidu**  
Hon'ble Chief Minister  
Government of Andhra Pradesh

Site Best viewed in 1024\*768 / Chrome, Firefox, IE9+  
All Rights Reserved with Director, Electronic Services Delivery.

Designed & Developed by **APOnline**

Chittivalasa  
KV Transformer

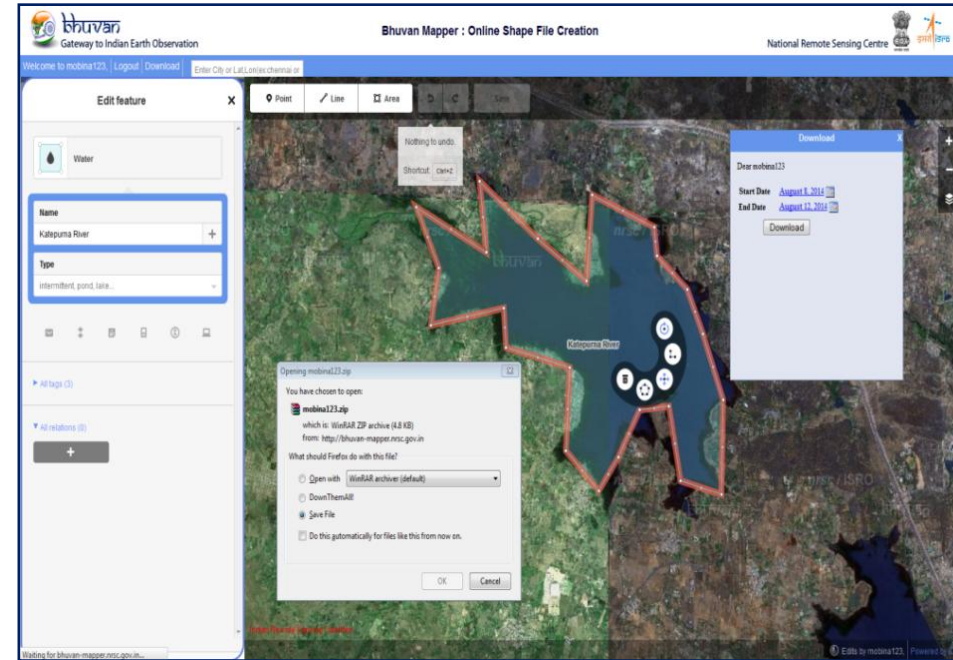
0 4 8 KILOMETERS

start Bhuvan | ISRO's Geo... Search Results Microsoft PowerPoint ... 4:37 PM



# Enhanced Online Shape file Creation

- Facilitates users to download the interpreted/delineated drawings as shape file along with customised attributes.
- Editing capability
- Filtering based on date and extensible to theme

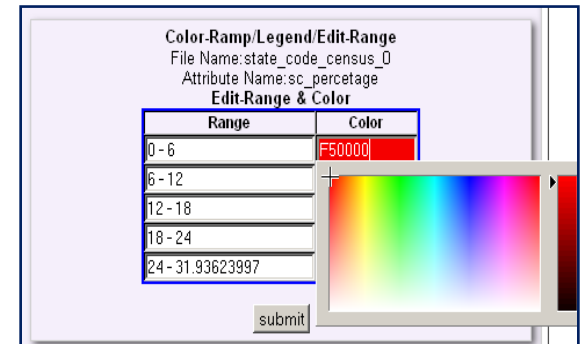
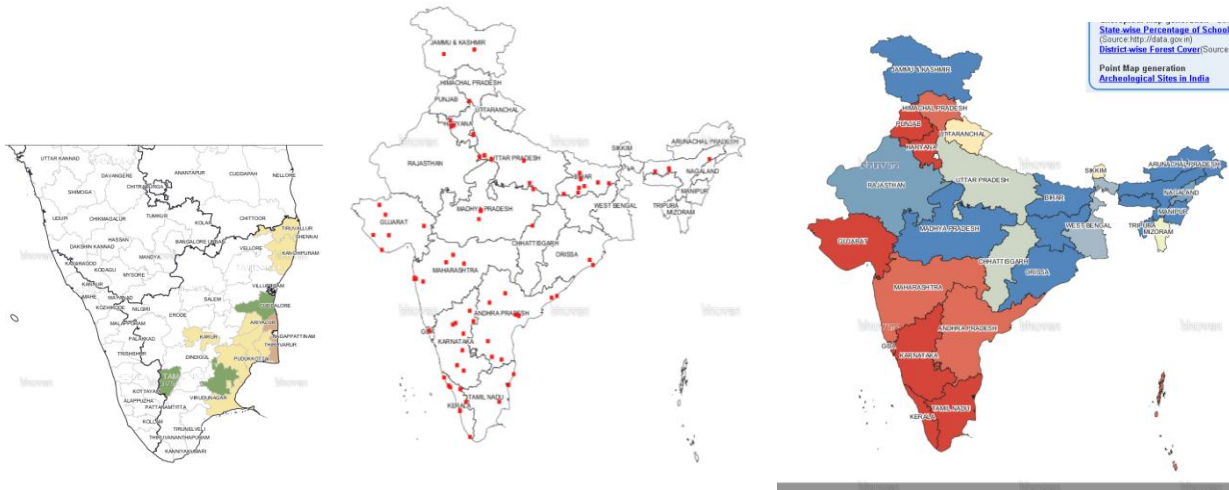
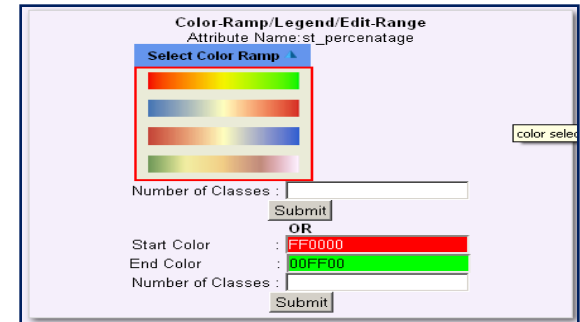
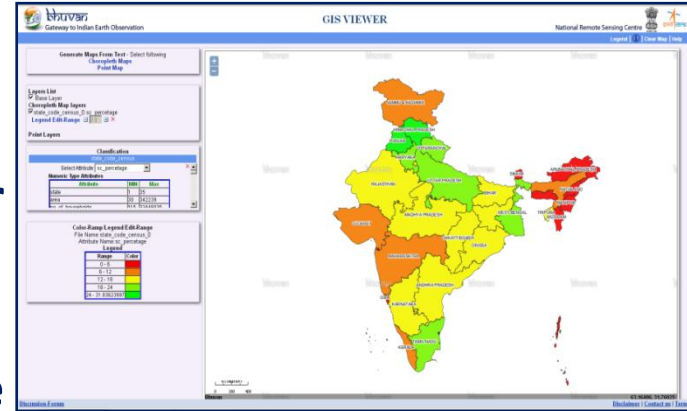


# GIS VIEWER

“Creation of Maps from Text Files”

## Salient Features

- Maps from State and District Census code or Name (Choropleth Maps) & XY Data (Point Map)
- Classification based on Equal Range, Unique values (color ramp or color parameters, Edit-Range and color values)





# APPLICATIONS

- 100+ Apps
- 75+ Mobile Apps
- 1 m high resolution satellite data for entire India (2017)

## Major Bhuvan Application Sectors



Asset Mapping and Inventory Creation

Planning & Development

Evaluation of Program Activities

Sustainable Development of Land and Water Resources

Flagship Programs : Multi-Activity Support

**Governance Functions**

# Diversity for Geospatial Governance Dashboard

## Building

## Applications

30 State  
Portals

24 Ministry  
9 State Dept

75+ Mobile  
Apps

### Geospatial Governance : Dashboard

A B C D E F G H I J K L M N O P R S T U W Y

#### Central Ministries

##### Ministry of Water Resources



**Sat-AIBP** : Inventory for visualization of Accelerated Irrigation Benefit Program (AIBP) Phase-I & II projects. Tools, Utilities for online monitoring of Phase-III projects

##### Ministry of Drinking Water supply and sanitation



**Water Supply Pipeline Grid Optimization** : Evaluation of Water Supply Pipeline grid using Geospatial Techniques

##### Ministry of Women & Child Development

Anganwadi

#### State Government

West Bengal

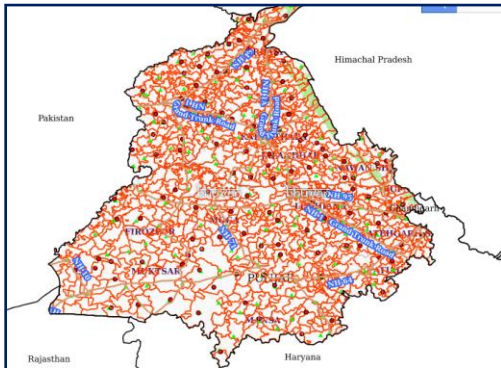




# State Portals

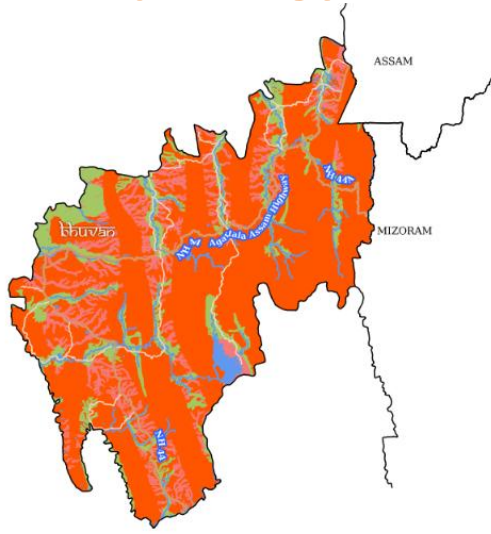


- A customized state viewer for 30 States having various Natural Resources, Admin layers, Socio-economic details
- Platform for State Remote Sensing Centres for sharing data
- Dynamic custom print with active layers and legend

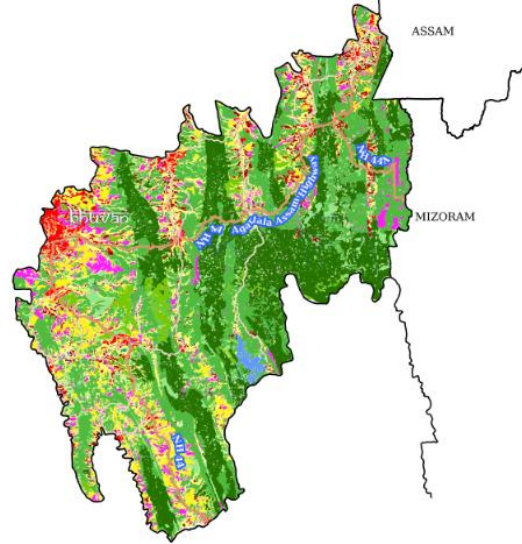


Asset Name	HANDPUMP
Asset Status	Not Working
Diameter of Bore well (in cms)	163
Depth (in cms)	35
Drain Existing(Yes/No)	Yes
Drainage Condition	Good
Platform Existing(Yes/No)	Yes
Field LPM	7
Asset Area Coverage	General
Asset Area Coverage	HIMAYATHSAGAR

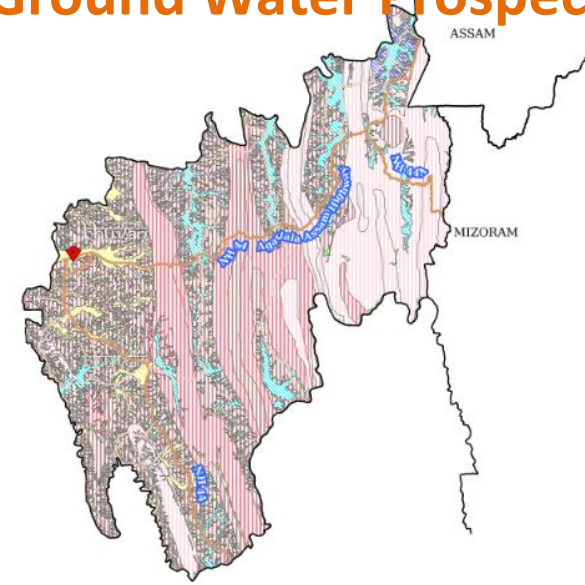
# Geomorphology



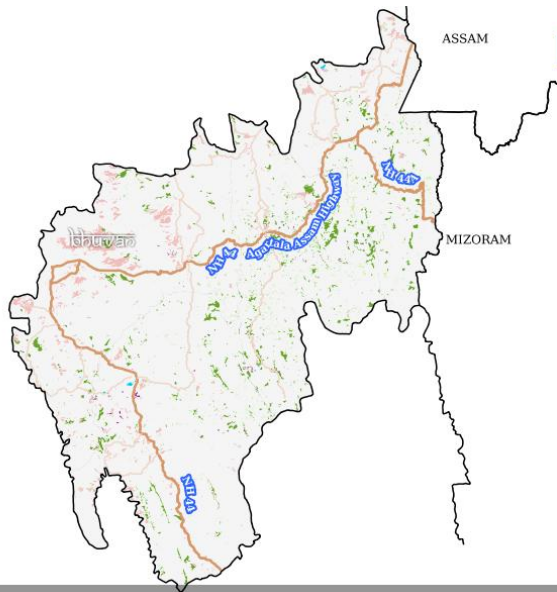
# Landuse Land Cover



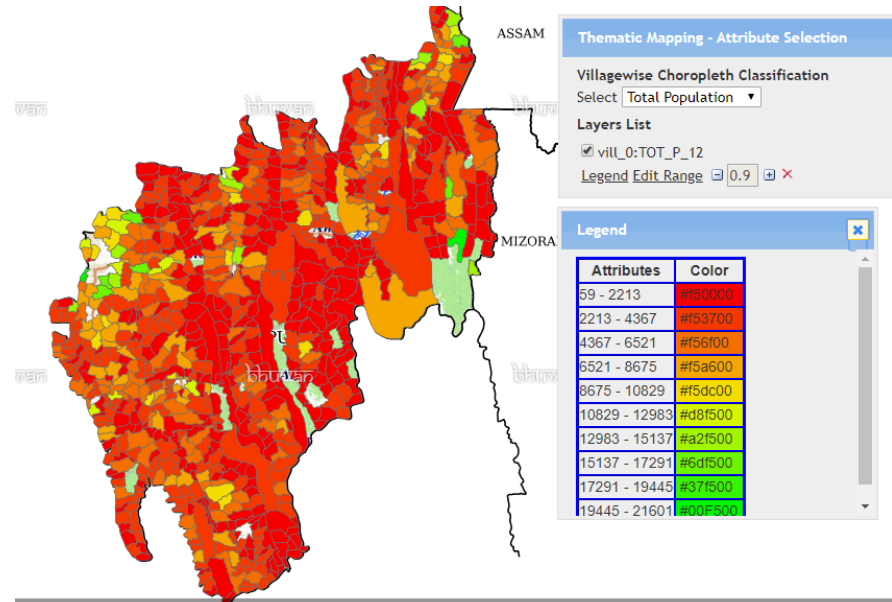
# Ground Water Prospect



# Wasteland



# Village wise Choropleth Maps of Census 2011





# NEDRP layers on Bhuvan

## 1. Administrative Data

District Boundary  
Circle Boundary

## 2. Infrastructure

Settlement Extends  
Settlement Points  
Roads(1:10K)

## 3. Land Resources

Land use/cover(1:50k)  
Land use/cover II Cycle (1:50k)  
Land Degradation  
Waste Land 03  
Waste Land 0506  
Waste Land 0809  
Soil(1:250k)  
Forest Division  
Forest Cover

## 4. Water Resources

Wetland Boundary 2005  
Wetland Post monsoon 2005  
Wetland Points  
Turbidity premonsoon 2008  
Watershed  
Waterbody  
Rivers

Papump  
apre

West  
Siang

Lower  
Dibang  
Valley

West  
Kameng

## 5. Bio Diversity

Biological Richness  
Fragmentation  
Disturbance  
Vegetation type

## 6. Terrain

Slope in % rise  
Contour 30m

## 7. Action Plan

Aforestation  
Horticulture

## 8. Disaster

Flood Zones  
Fire Location 1jan-30



# Bhuvan Applications





# Bhuvan-MGNREGA



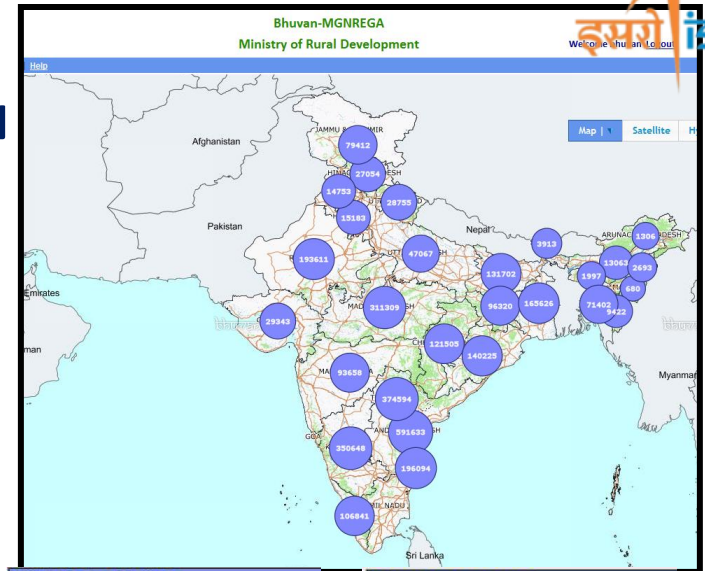
- Geo Tagging of MGNREGA assets on BHUVAN
- Support for Phase-1 and Phase-2
- User Registration and Authorization
- Central ,State ,District, Block, Panchayat
- Geoportal
  - 1.Citizen view
  - 2.Administrator View
  - 3.Moderation
  - 4.Report Generation
  5. Dashboard
- 17 Categories
- 153 Sub-categories

## Geo-Tagging Status for the country

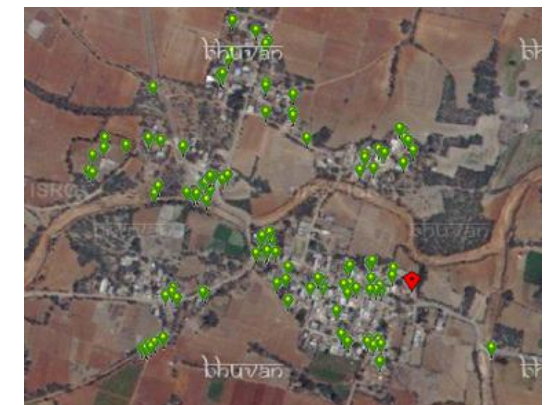
**Total Assets Geotagged:6.05 Cr**

**Daily Avg. Geotagging > 45K**

**Daily Avg. Moderation > 46K**

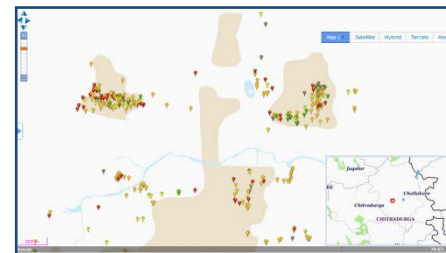
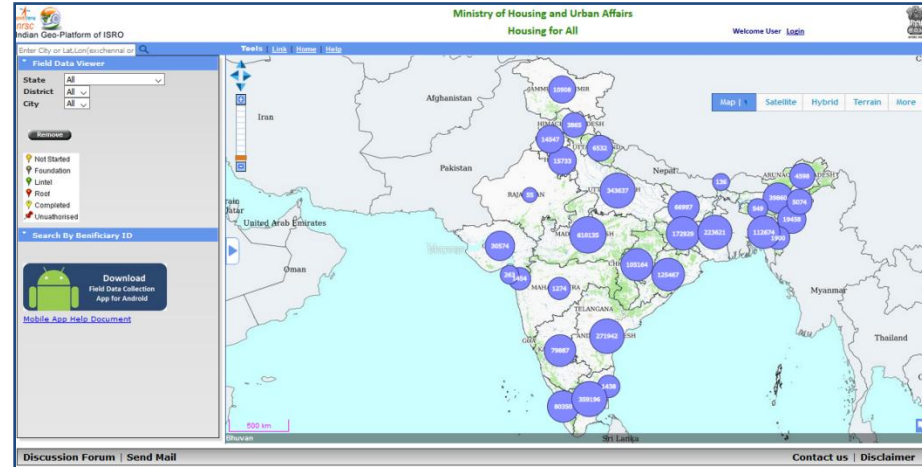


MGNREGA Asset DETAILS	
Phase	1 2
Sl.No	14521794
Creation Time	2017-04-11 17:15:11
Longitude/Latitude	79.51/15.6 Analys
Stage	0
Level1 - Asset Information	
Asset Name	Development of Land for weaker sections



# Ministry of Housing and Urban Affairs: Housing for All

- Monitoring of more than 90 Lakh Houses across the country
- Stage wise Monitoring support
- Helping in release of funds to beneficiaries based on progress
  - Total Assets Geotagged:9305703
  - Moderated :9167014



Housing For All Asset DETAILS	
Sl.No	1240540
Beneficiary Name	VENKATESH
Project Name	Construction of 517 Houses in Challakere Under PMAY Scher
Address	1, CHITRAYANAHATTI,Challakere Chitradurga Karr
Observername	PALALIAH P
Creation time	2017-12-13 19:02:46
Beneficiary Id	299031191747000006
Capture Location	Center of the house(CH)
Photo1 Captured From	Center
Photo2 Captured From	Left
Construction Type	New House
House Type	Pucca (CC or Stone slab)

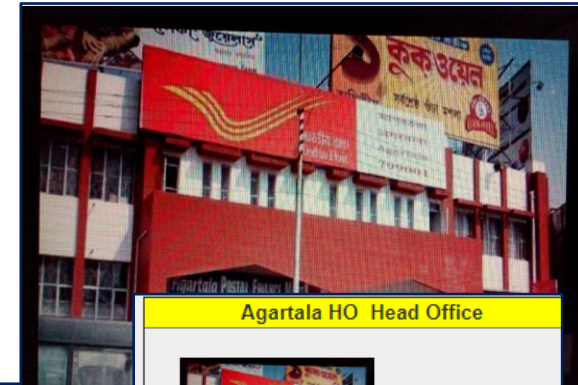
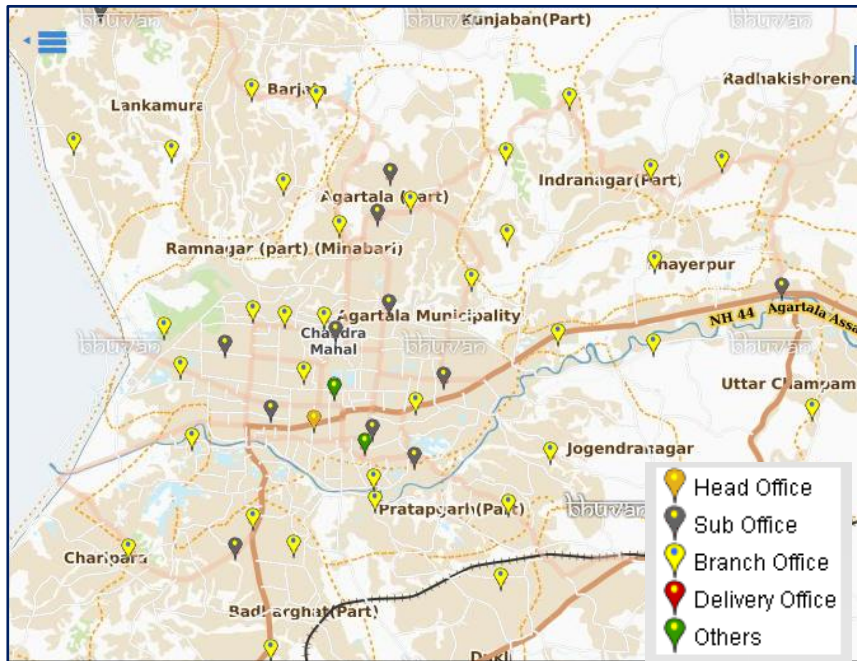


# Department of Post

“Administrator view having 36 State level logins and Citizen having option to view, search and Pincode information system”

## Salient Features

- **Spatial Visualization** of Geo-tagged post offices based in the filters provided
- **Moderation** by Department of Post officials
- **Search Post offices / Proximity** by Location name, Filter by Services provided
- **Pincode** – Pincode information system with Details of services offered



**Get Pincode Details**

799001

*Click on the Post Office name to get the details*

- AGARTALA BAZAR N . D. SUB POST OFFICEIM (Sub Office)
- AGARTALA COURT SUB POST OFFICE (Sub Office)
- Agartala HO (Head Office)**
- AGARTALA SORTING (Others:- AGARTALA SORTING )
- Jagannath Bari Road SO (Sub Office)
- SUB RECORD OFFICE AGARTALA

**Agartala HO Head Office**

Click to View

✓ Mail products	✓ Parcels
✓ Insurance	✓ International
✓ Speed Post	✓ Business Post
✓ Express Parcel	✓ Forex Services
✓ Media Post	✓ Saving Scheme
✓ Life Insurance	✗ Mutual Fund
✓ Bill Mail	✓ Direct Post
✓ Retail Post	✓ e Payment

**Delivery Status** - Delivery Operates from 1000 hours to 1800 hours hrs

**Address** -Agartala-799001

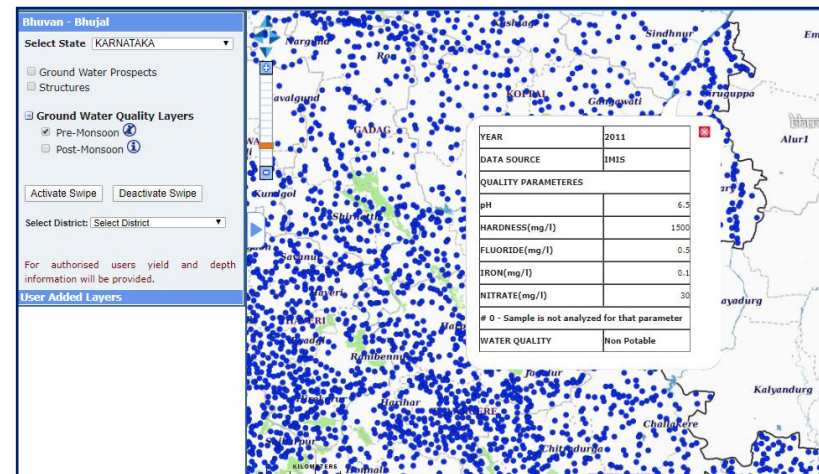
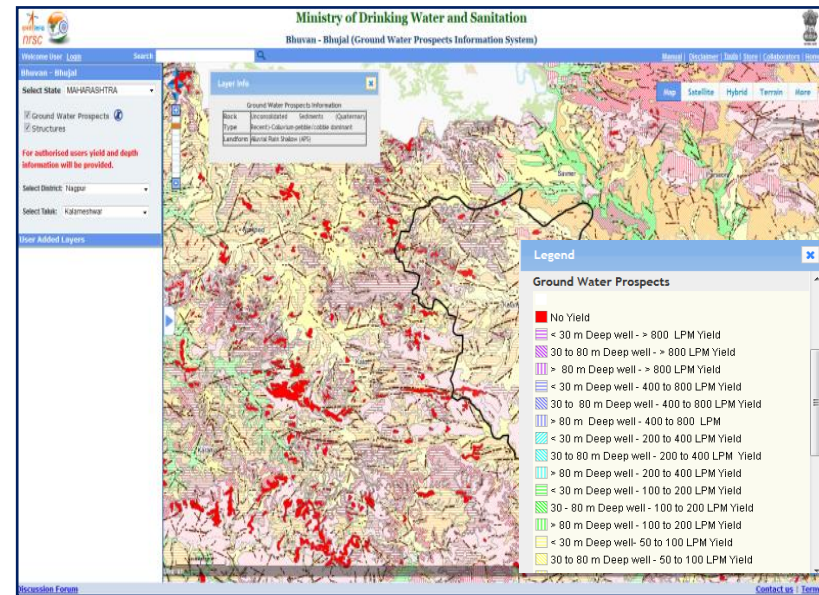
Reference number : 166416

*Click on the photo for fullview*

<b>No of Offices Geotagged</b>	177496
<b>No of Offices Moderated</b>	168840

# Bhuvan-Bhujal: Ground Water Prospects Information System

- Facilitating visualization of State wise Ground Water Prospects and Structures information.
- Geological parameters: Lithology (rock type), Geomorphology (landform), Geological structures (fractures/faults).
- Ground water prospects (Authorized users): Probable Depth and yield range of wells
- Ground Water Quality Information
  - Pre Monsoon
  - Post Monsoon



## “Ground Water Prospects for 33 States”

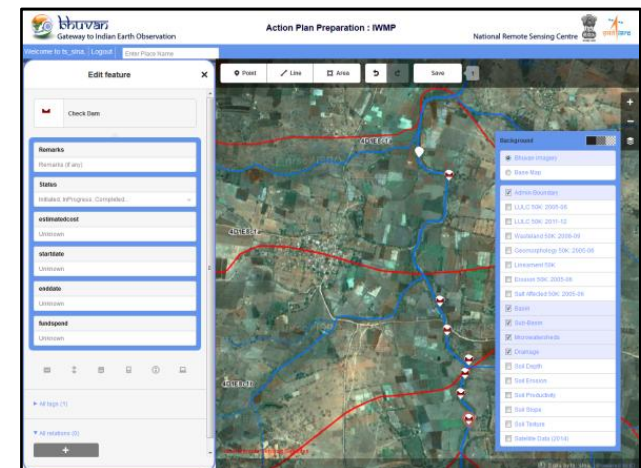
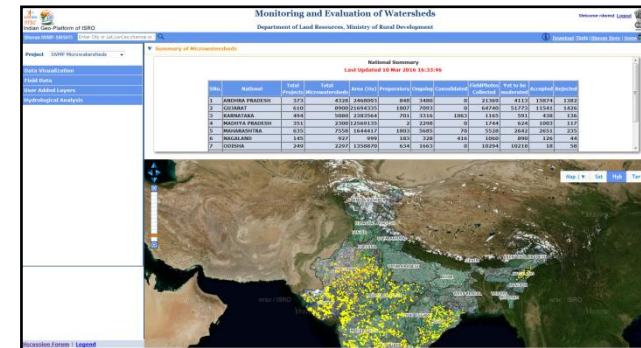
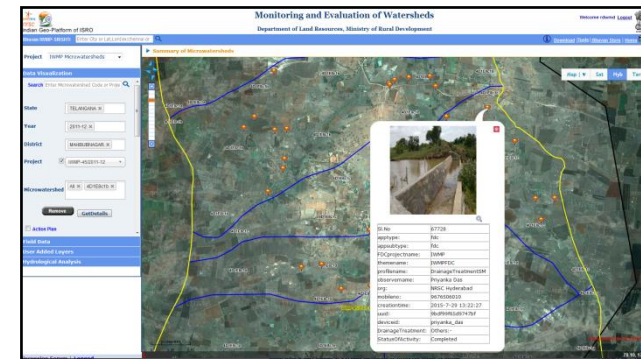
- LITHGEOM - 33 States
- Structures – 32



# Bhuvan IWMP: Monitoring & Evaluation of Watersheds

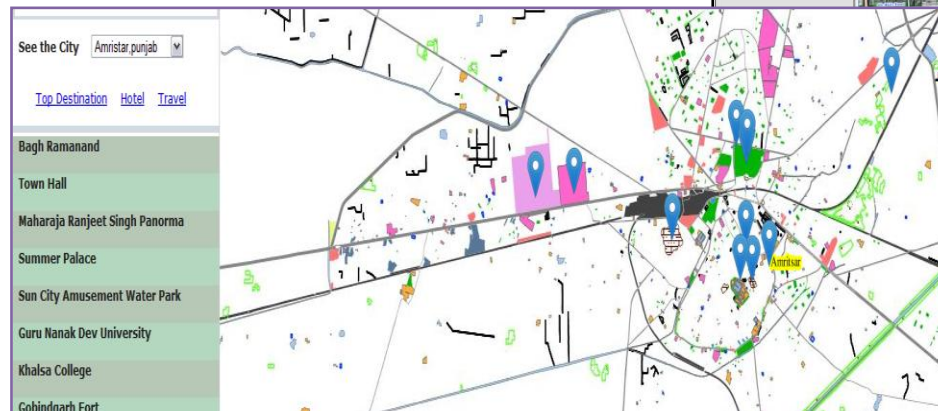
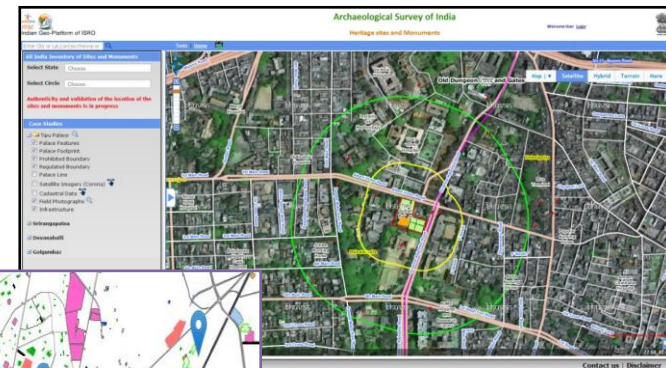
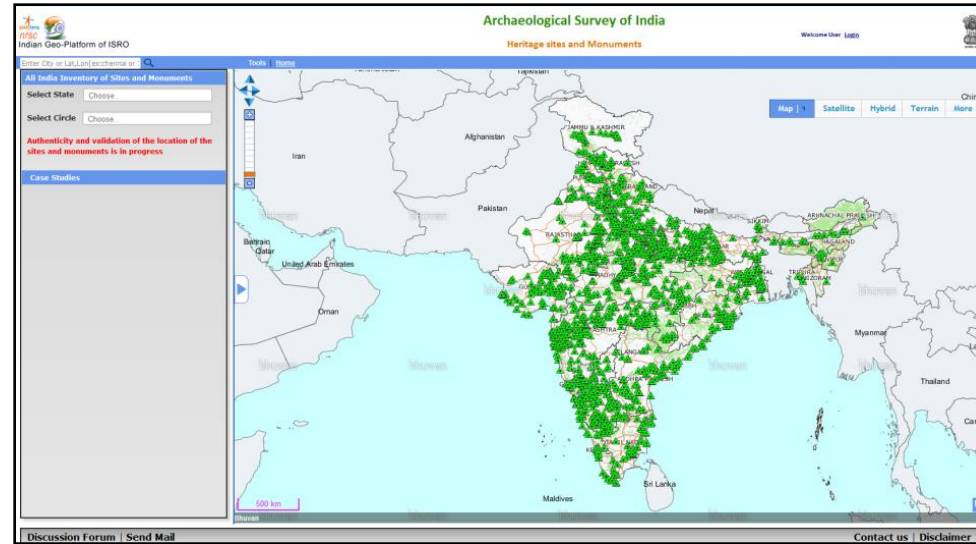
*Application facilitating the consolidated view of the Watersheds along with all supported datasets aimed at planners and general public.*

- Hierarchical Watershed Select Mechanism
- Visualization of Watershed datasets Action Plan, Cadastral Boundary, Administrative Layers etc.
- Time series satellite data for monitoring the progress.
- Year-wise IWMP Watersheds, Net Plan Visualization.
- Customized Bhuvan Mapper for IWMP Users
- Admin, Data Provider, Guest views.
- Reports of Watersheds State/District/Year-wise.



# Heritage Sites and Tourism GIS

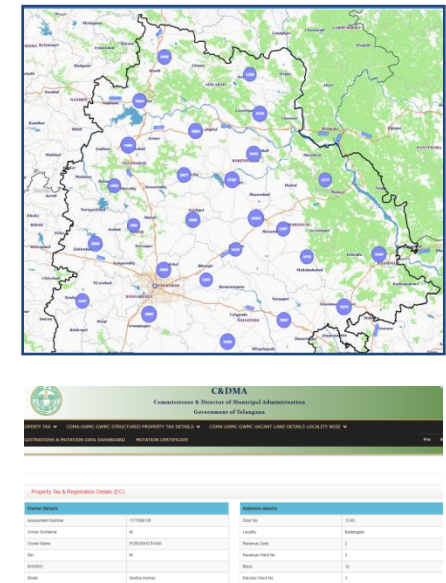
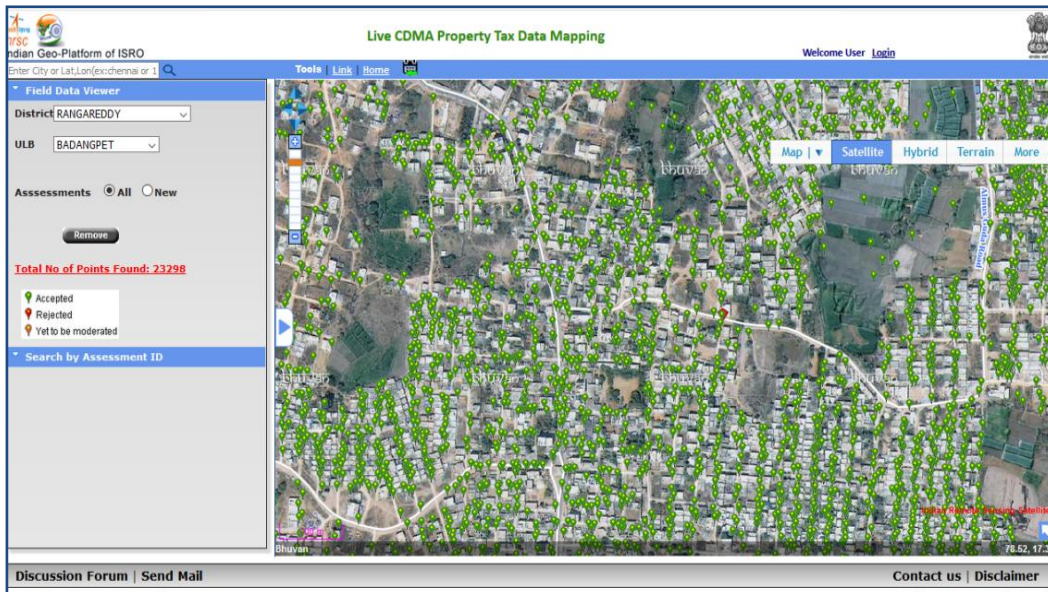
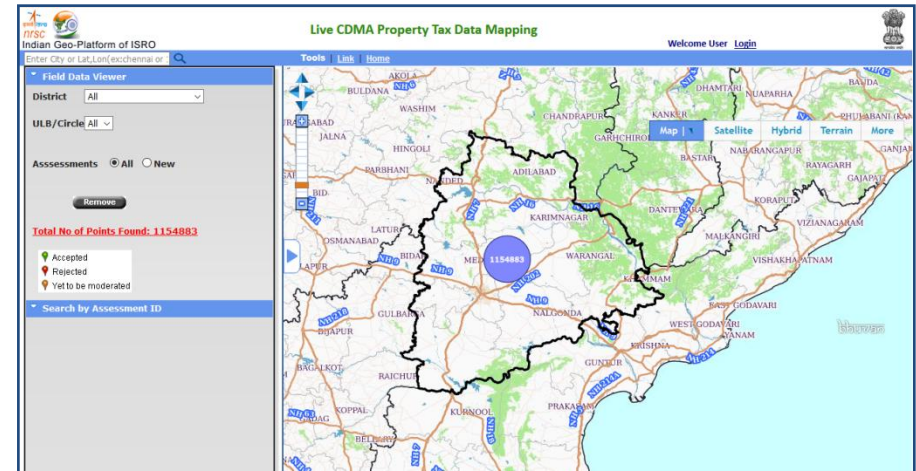
- All India inventory of Heritage sites and Monuments.
- State, Circle wise selection.
- Monuments
- Protected, Prohibited, Regulated boundaries
- Field Photographs
- Web services
  - ✓ Top Destinations
  - ✓ Hotels and Stay
  - ✓ Food Hubs
  - ✓ Tourist spots
  - ✓ Heritage walk
  - ✓ Services
  - ✓ Travel- Find Route
  - ✓ Commercial





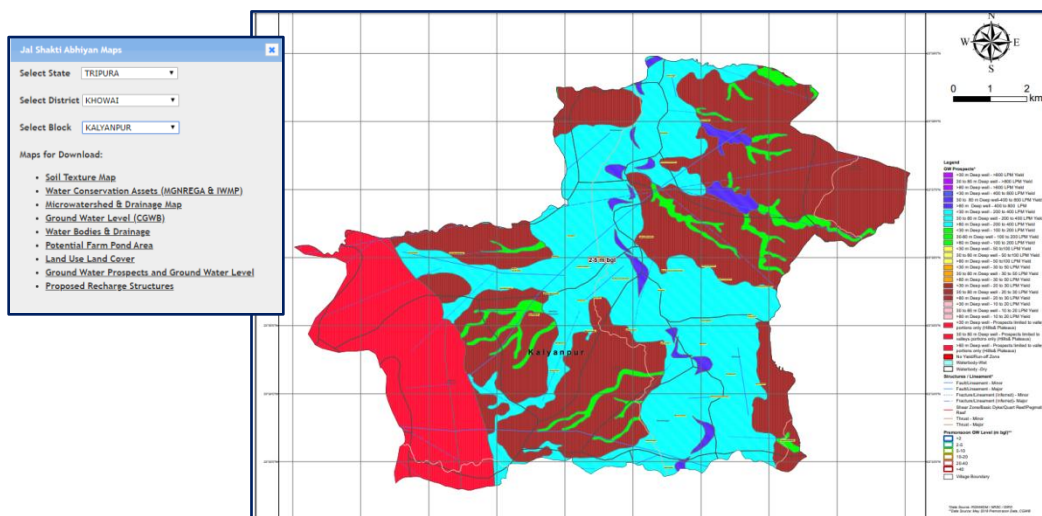
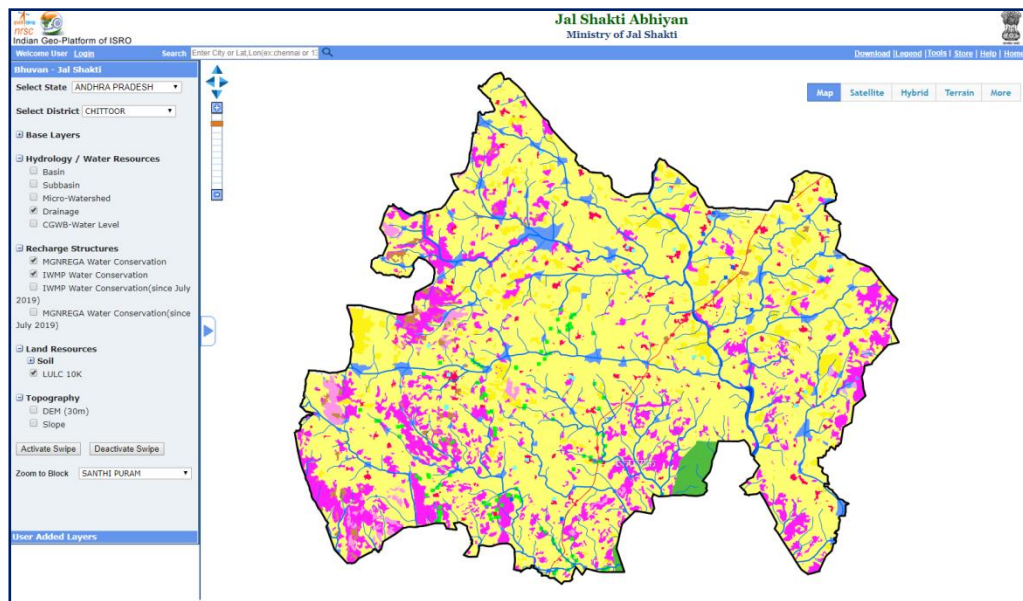
# Live CDMA Property Tax Data Mapping

- Geotagging of more than 12 Lakh Assessments in Telangana
- Property Tax Mapping for 72 Urban Local Bodies under 31 Districts
- Supported in identifying under assessed and new assessments



# Bhuvan-Jal Shakti Abhiyan

- Bhuvan-JSA Application is envisaged to support Jal Shakti Abhiyan - a campaign for water conservation and water security by Ministry of Jal Shakti, Government of India
- 1242 Blocks of 255 Districts (out of 1592 Blocks) data available
- Provides visualization of rich Thematic and Water Conservations Assets information
  - Base Layers
  - Hydrology/Water Resources
  - Recharge Structures
  - Land Resources
  - Topography
- Provides Block level Maps for 8 Themes in A0 Size PDFs and Toposheet wise Proposed Recharge Structures information



Map Download Since 1st July 2019: 43344



# Accelerated Irrigation Benefit Program (AIBP)

## Inventory : 103 Projects

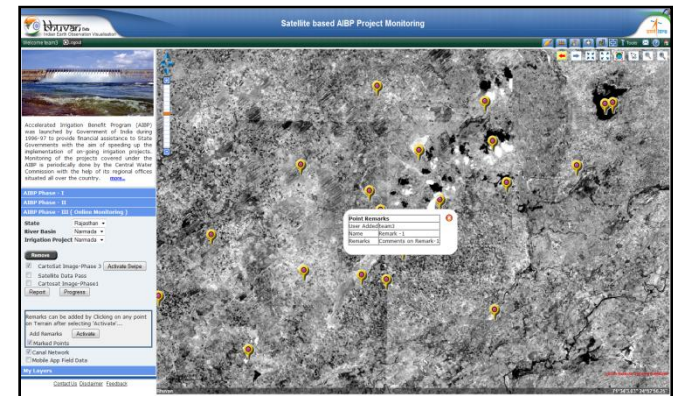
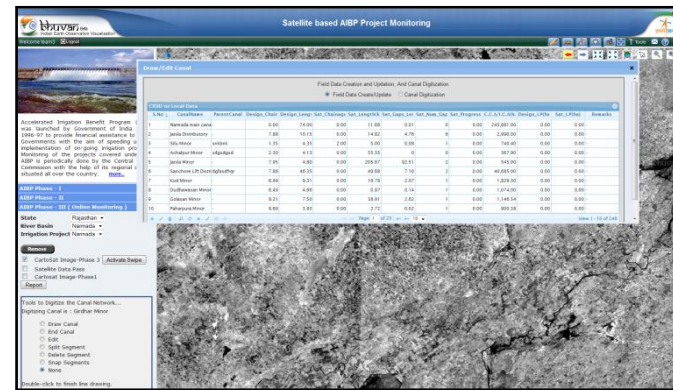
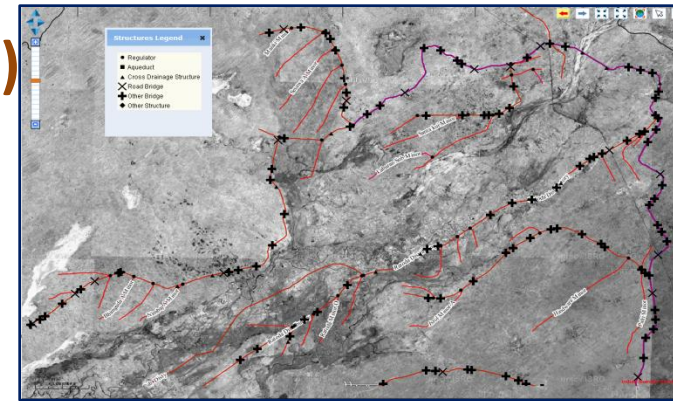
- Bhuvan – AIBP Portal: Facilitates Visualization of Irrigation projects carried under 2 Phases
  - Phase-I : 53 Projects
  - Phase-II: 50 Projects
  - Phase-III: Ongoing
- Datasets Available for Visualization:
  - Canal Networks,
  - Canal Boundaries,
  - Hydraulic Structures

## Monitoring the Canal progress on Bhuvan

**Phase-III:** This module is for the Ongoing projects facilitating CWC officials for the Online monitoring through Satellite data and Digitization Tools available.

### Salient Features:

- Canal Digitization through help of Cartosat data.
- Add Structures, Project Boundary, Remarks
- 3 levels of Access Control
- Data Editing facility for Field Data.

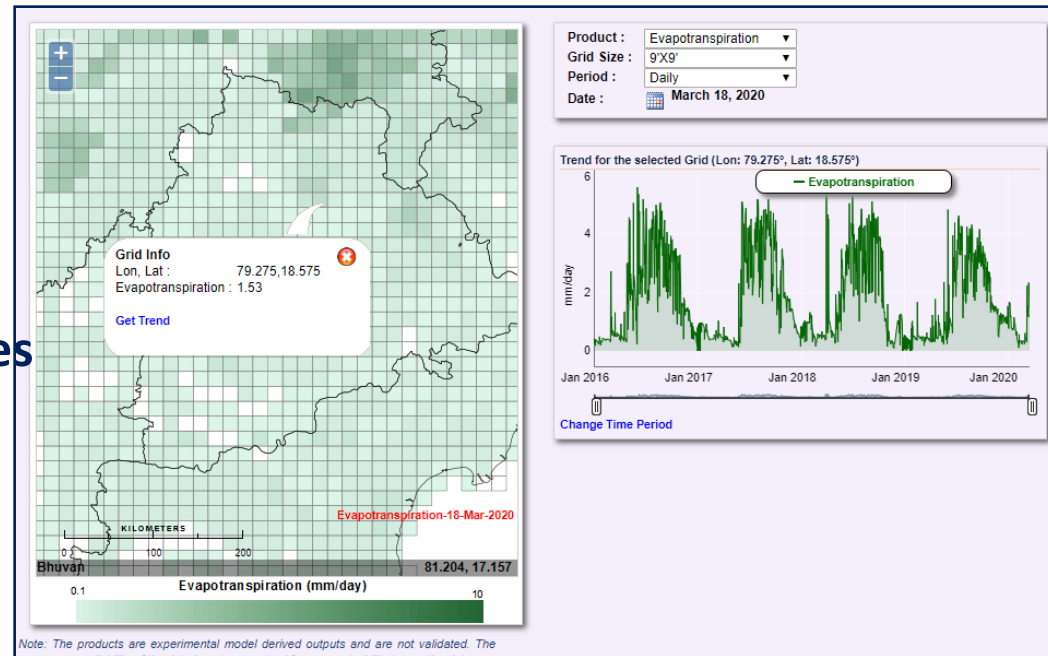
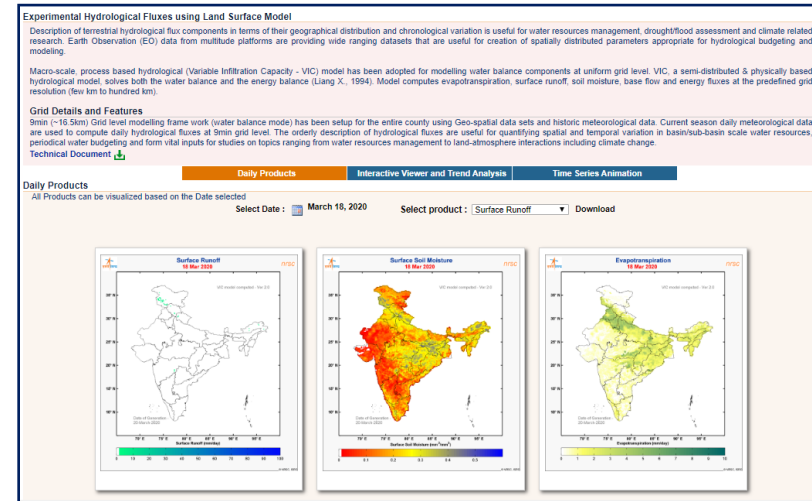


**“300 Layers as WMS/WMTS, 380 GB of datasets”**

# Hydrological Science

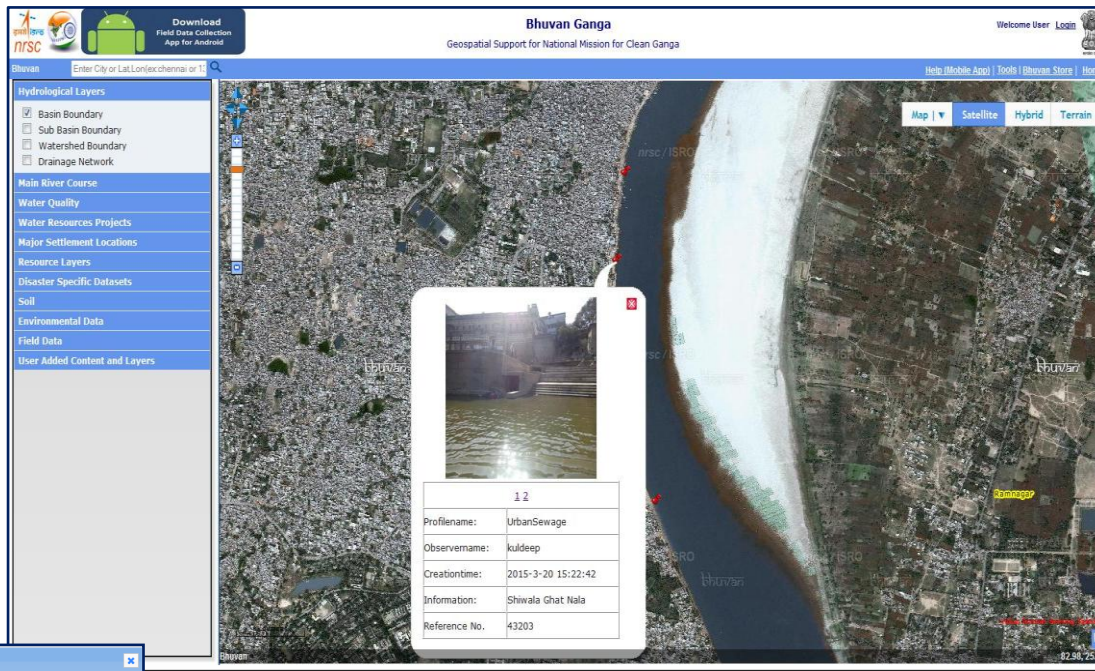
## Near Real Time Hydrological Modelling - Products & Services

- **Hydrological Fluxes**
  - 0.15° Spatial Resolution
  - 0.05° Spatial Resolution
- **Visualization & Time Series Animation**
- **Trend Analysis**
  - Surface Runoff
  - Evapotranspiration
  - Surface Soil Moisture
- **Download of Products**
- **Basin Scale Fluxes**
- **Basin Wise Hydrological Fluxes**





**Platform for crowd sourcing to monitor pollution in river Ganga and enable decision makers to prioritize interventions by enabling public to collect and report information on various pollution sources that affects water quality of river Ganga**



The screenshot shows the Bhuvan Ganga portal interface. The main map is a satellite view of a river area. A popup window displays a photo of a polluted river and the following details:

- ID: 12
- Profile Name: UrbanSewage
- Observation Name: kuldeep
- Creation Time: 2015-3-20 15:22:42
- Information: Shiwala Ghat Itala
- Reference No.: 43203

The left sidebar contains various layers and data categories:

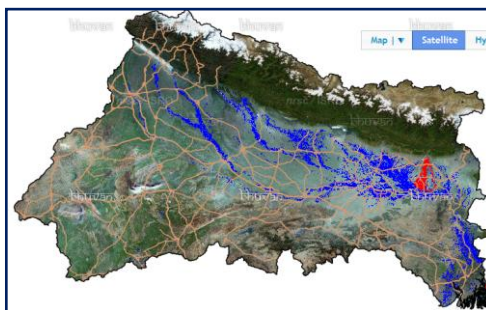

- Hydrological Layers: Basin Boundary, Sub Basin Boundary, Watershed Boundary, Drainage Network
- Main River Course
- Water Quality
- Water Resources Projects
- Major Settlement Locations
- Resource Layers
- Disaster Specific Datasets
- Soil
- Environmental Data
- Field Data
- User Added Content and Layers

Statistics

List of villages within a distance of 5 km of river Badanagarh, Ramganga basin

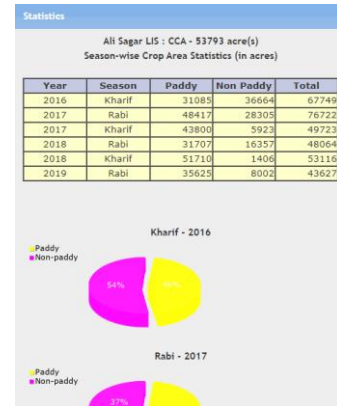
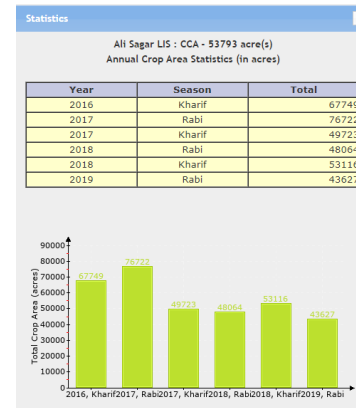
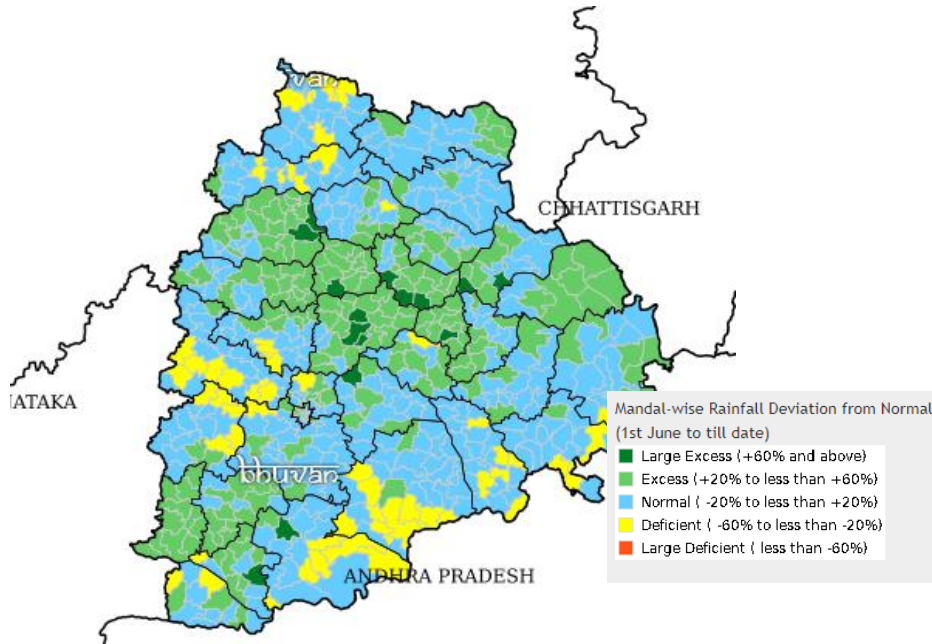
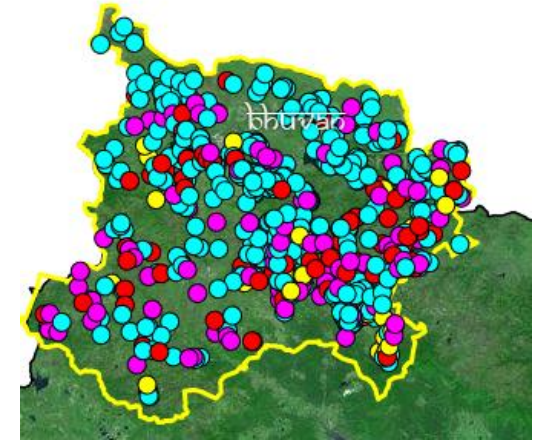
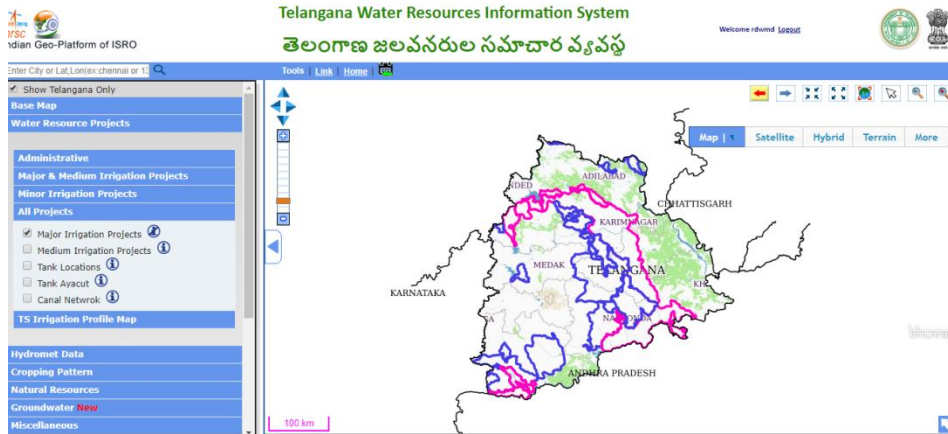
Summary States : 1 Tehsil : 3 Village : 278 No. of Households : 6 Total Population : 33 Male : 14 Female : 20 SC : 8 ST : 1 Literate : 17 Illiterate : 17

State	Tehsil	Village	No. of Households	Total Population	Male	Female	SC	ST	Literate	Illiterate
JK	Bhikha Sain	Achhron Malla	67	349	171	178	133	0	204	145
JK	Bhikha Sain	Achhron Talia	37	181	81	100	44	0	83	98
JK	Bhikha Sain	Ajdi Malai	85	392	176	216	0	0	232	160
JK	Bhikha Sain	Ajdi Tali	104	478	209	269	35	3	272	206
JK	Bhikha Sain	Amohar	30	120	46	74	0	0	75	45
JK	Bhikha Sain	Ansutake	35	180	67	113	0	0	112	68
JK	Bhikha Sain	Badaruwa Tila	6	34	17	17	0	0	25	9
JK	Bhikha Sain	Balyuli	12	63	26	37	0	0	35	28
JK	Bhikha Sain	Bandharan Basnal	35	161	77	84	3	0	87	74
JK	Bhikha Sain	Bandharan Bist	4	19	8	11	0	0	12	7
JK	Bhikha Sain	Bangidhar	32	168	70	98	25	0	92	76
JK	Bhikha Sain	Baret	50	214	89	125	0	0	132	82
JK	Bhikha Sain	Barhaliya	32	162	79	83	1	0	90	72
JK	Bhikha Sain	Bhatnagar	16	82	39	43	1	0	61	21

The screenshot shows the Bhuvan Ganga portal interface with a 3D topographic map of the Ganga basin. The map is color-coded to represent elevation, with green for lower elevations and brown for higher elevations. The river network is shown in blue, and the surrounding land is shown in shades of green and brown. The map is titled 'Bhuvan Ganga' and includes a legend and navigation controls.

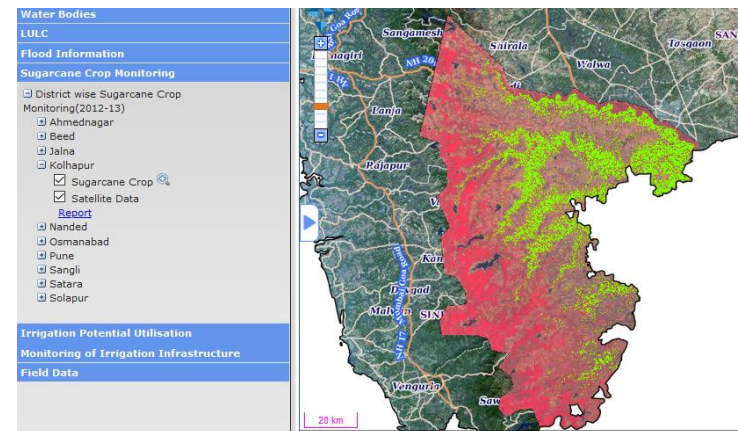
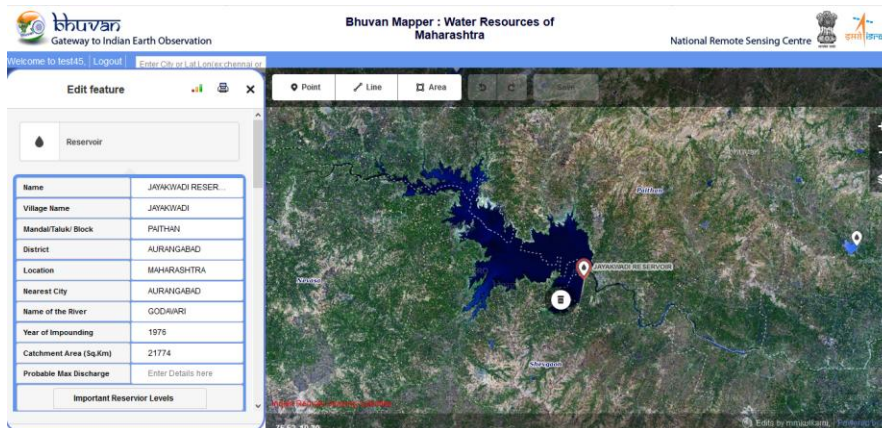
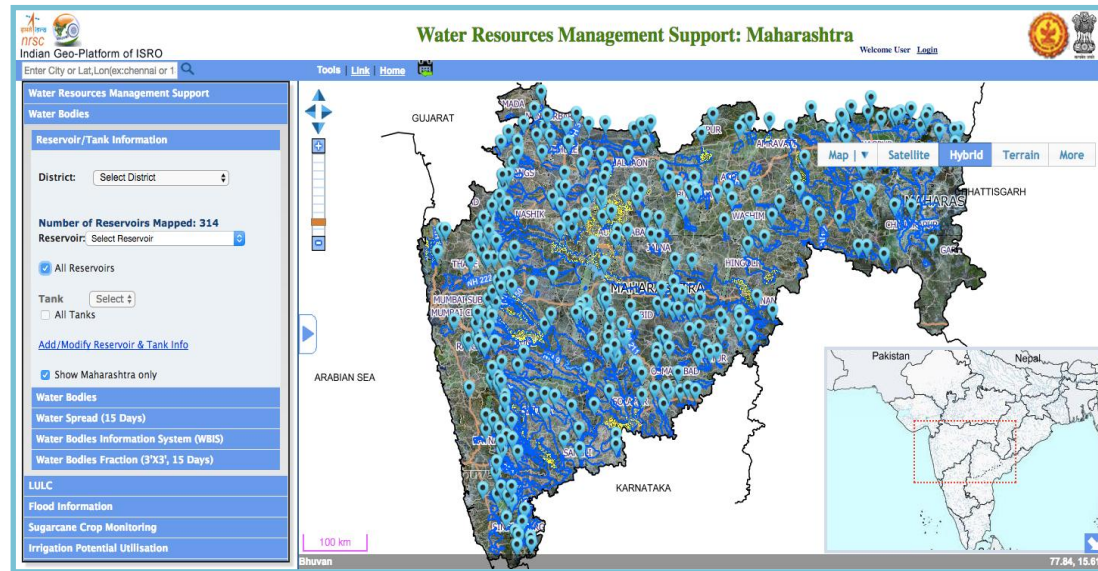
# Telangana Water Resources Information System





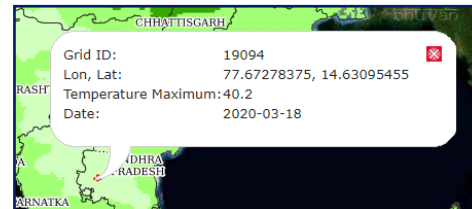
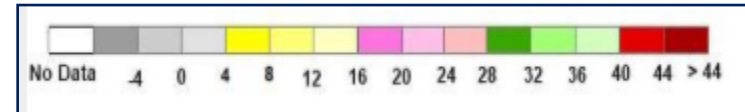
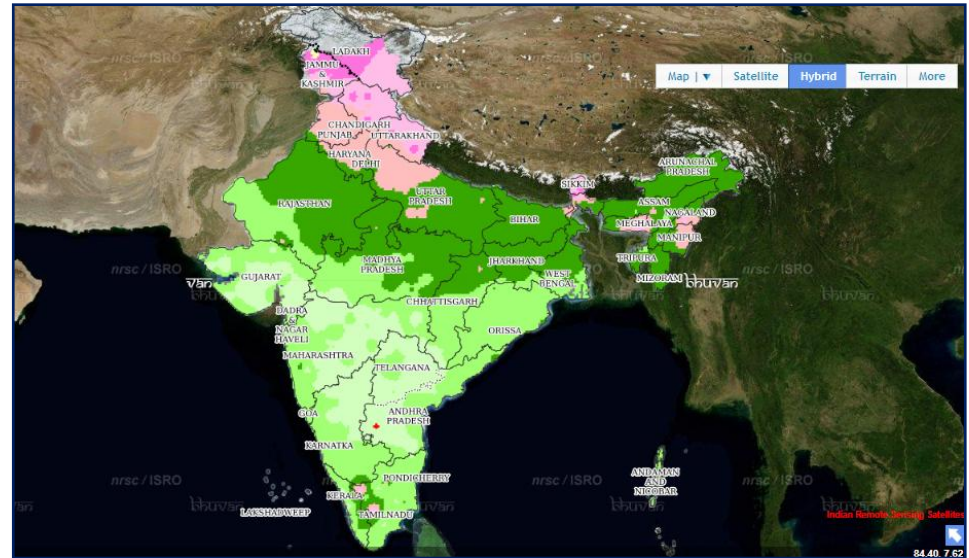
# Water Resources Management Support: Maharashtra

- Platform for Mapping Reservoir and Tanks
- Customized Tool with detailed Attributes
- Tools for Reports and updating Reservoir Capacity
- Visualization of District wise Sugarcane Crop Monitoring



# Bhuvan - IMD Weather Products

- Visualization of IMD products through Bhuvan spatial platform
- Daily, Weekly, Fortnight, Monthly, Seasonal Weather Products
- Products
  - Temperature
  - Relative Humidity,
  - Wind Speed
  - Cloud
  - Rainfall
- Grid info



**Spatial Distribution of Weather Parameters**

Product Frequency:

Parameter:

Type:

Select Date:

[Technical Document](#)



# Geo-tagging of Rashtriya Krishi Vikas Yojana (RKVY) Assets

**Rashtriya Krishi Vikas Yojana**

Indian Geo-Platform of ISRO

Enter City or Lat,Lon(ex:chennai or 1)

Tools | Link | Home

**Field Data Viewer**

Sector: All x

State: Andhra Pradesh x

District: All x

Year: All x

**Dashboard**

Remove

**Total No of Points Found:30129**

Legend:

- District Accepted
- State Accepted
- Rejected
- Yet to be moderated

**RKVY Asset Details**

Sl.No	2695140
profilename:	Sericulture
User ID:	
StateCode:	28
StateName:	ANDHRA PRADESH
DistCode:	2814

- RKVY has been the flagship scheme of DAC&FW for achieving and sustaining the desired growth rate of agriculture and allied sectors in the country
- Geotagging using android app to locate RKVY assets through Bhuvan
- Total RKVY Assets Geotagged:408223



# CHAMAN

## Coordinated Programme on Horticulture Assessment and Management using Geoinformatics



Ministry of Agriculture



Coordinated Programme on Horticulture Assessment and Management using Geoinformatics(CHAMAN)

Enter City or Lat,Lon(ex:chennai or 12

- Banana
  - Banana
    - Kadapa
      - Banana Plantations
    - Bellary
      - Banana Plantations
      - Field Photos
    - Thoothukudi
      - Banana Plantations
      - Field Photos
    - Trichy
      - Banana Plantations
      - Field Photos
    - Banana Plantations
    - Field Photos
  - Chamrajnagar
    - Banana Plantations
  - Tirunelveli
    - Banana Plantations
- Citrus
- Mango
- POI Data-Fruit Grid
- Field Photographs

Legend

- Banana Plantations
- Banana
- Field Photos
- Field Photos

Map | Satellite Hybrid Terrain More

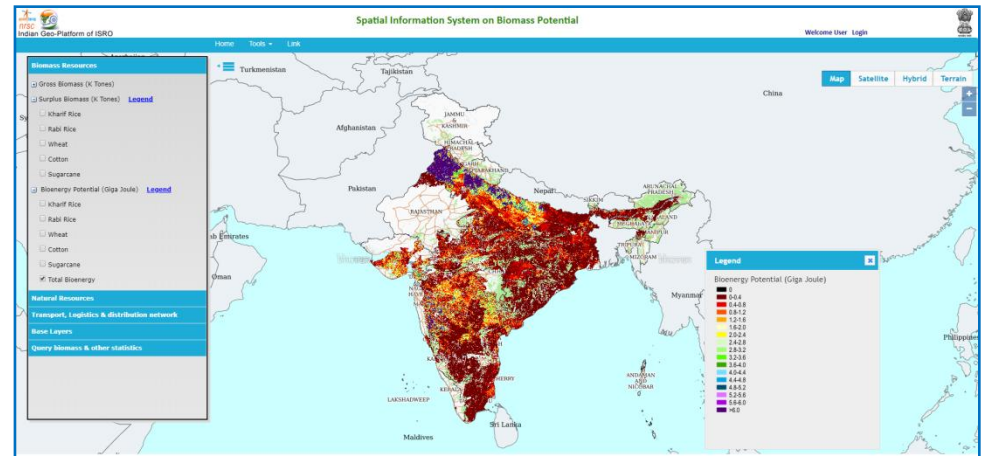
Banana

78.65, 10.89



# Spatial Information on Biomass Potential

- **Spatial Information System on Biomass Potential from crop residues over India using geospatial techniques**
- **Biomass Resource layers**
  - Gross Biomass
  - Surplus Biomass
  - Bio Energy Potential
  - Rice, Wheat, Cotton, Sugarcane Crop information
- **Natural Resources**
  - LULC, Hydrological Layers
- **Transport and Base Layers**
- **Spatial Query - Site suitability analysis for bio-fuel plants**
  - Helps in planning, designing and sustaining a biofuel/biogas plants
  - Options to select point of interest (POI) for biofuel plant, fetch area
  - Analyze the data under the fetch area based on the selected layers
- **Detailed Report and Statistics with Details on Site Location and Information on Biomass Resources**
- **Report in PDF format along with LULC Maps**



**Query biomass & other statistics**

Query the biomass availability over the fetch area along with other resources

- 1. Point of Interest (POI)**  
(Provide the proposed site of biofuel plant)  
[Start to identify proposed site](#)
- 2. Fetch area**  
(Area from which crop residues would be collected)  
[Start to identify fetch area](#)
- 3. Analyse the statistics**

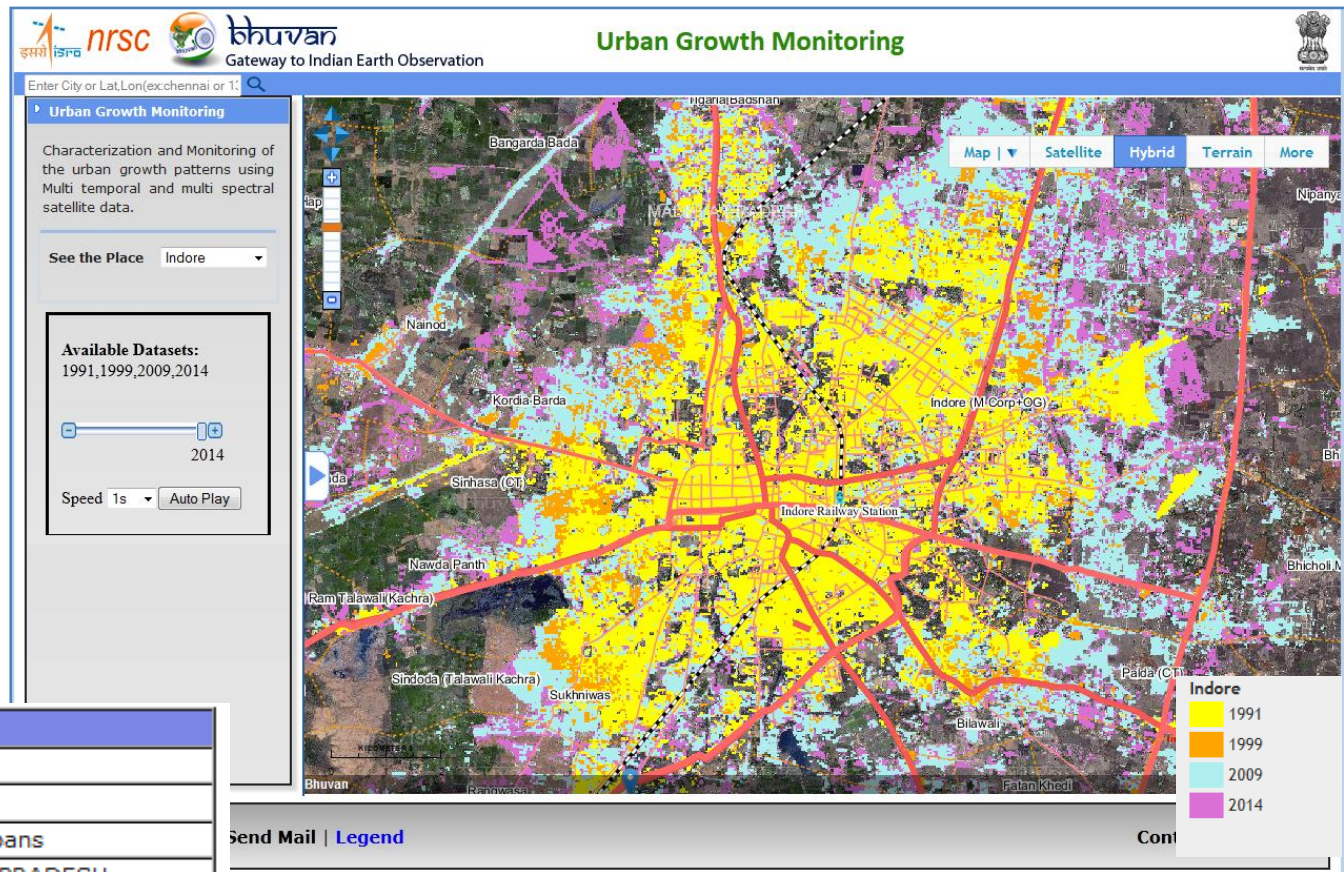
Basic Information of the Site Location & Fetch Area	
1 Fetch Area (in Sq. Km.)	14541.57
2 Coordinate of Site Location	Latitude : 17.53418, Longitude : 78.20068
3 State of Site Location	Telangana
4 District of Site Location	Medak District
5 City of Site Location	Insapur
6 Locality of Site Location	Not available
7 Nearest Railway Station	Patancheru Railway Station, 7,807 Kms away
8 Nearest Petrol/Gas Station	Indian Oil Petrol Pump, 1,912 Kms away

Information of the available Biomass/Bioenergy Resources						
	Kharrif Rice	Rabi Rice	Wheat	Cotton	Sugarcane	Total
Gross Biomass over fetch area (K Tones)	NA	NA	NA	NA	NA	NA
Surplus biomass over fetch area (K Tones)	NA	NA	NA	NA	NA	NA
Bioenergy potential over fetch area (GJ)	505.76	NA	NA	3611.51	NA	4603.73

# Urban Growth

Characterization and Monitoring of the urban growth patterns using Multi temporal and multi spectral satellite data.



City Details	
City/Town Name	Indore
Population(2011)	1960631
Category	Major Urbans
State	MADHYA PRADESH
<a href="#">More Details</a>	





# School Bhuvan

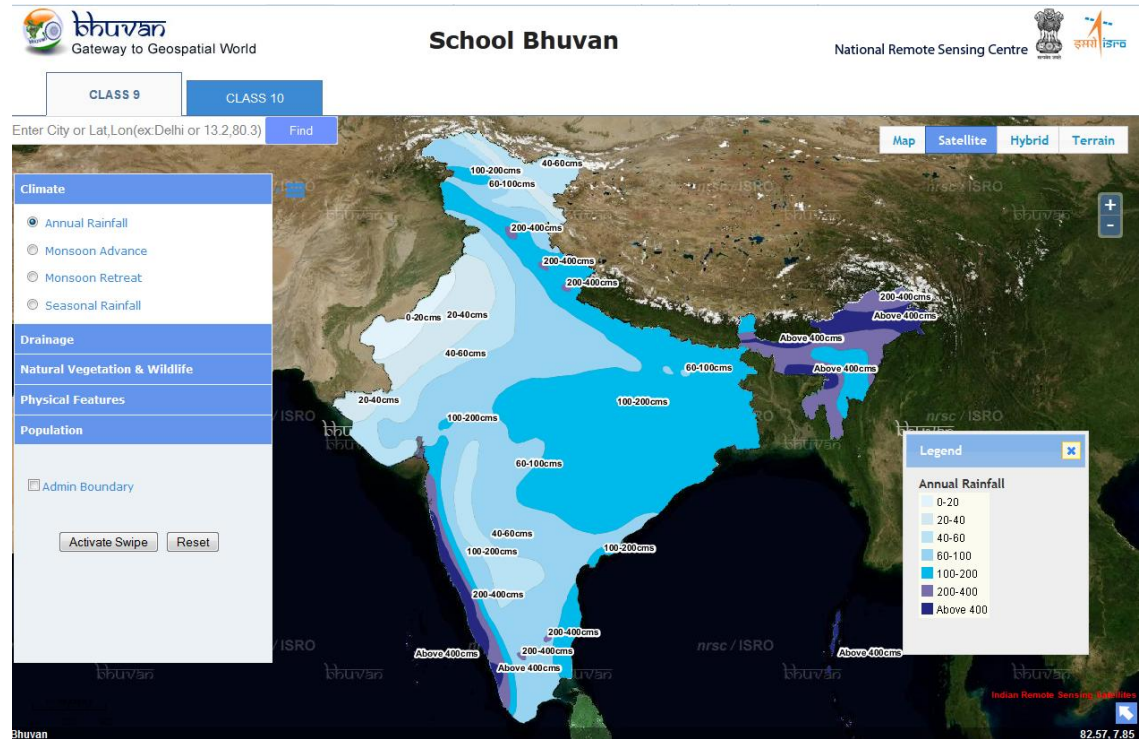
An e-learning portal for the students



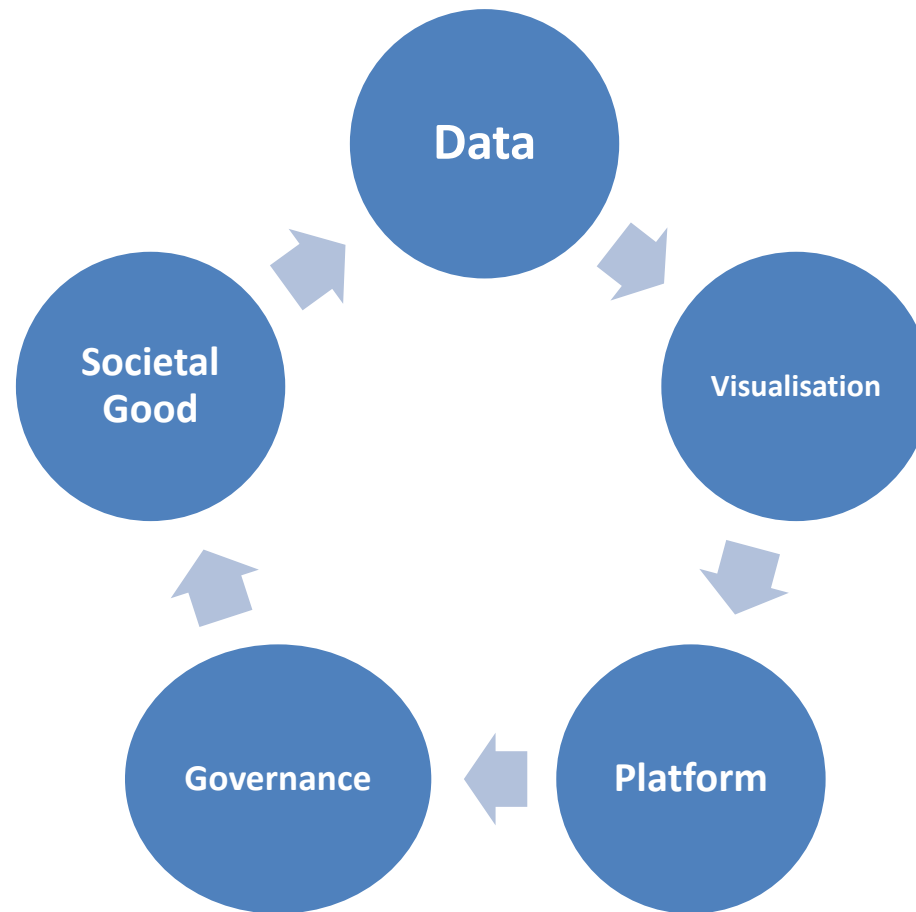
A portal providing map based learning to bring awareness among the students about country's natural resources, environment and their role in sustainable development.

## Salient Features

- Visualization of 9th ,10th class maps of various categories (Agriculture, Water, Soil, Mineral etc) based on NCERT syllabus
- Provision to swipe the layers to know the ground reality
- Provision to take print the maps in PDF format



# Thank You



**bhuvan@nrsc.gov.in**

**<https://bhuvan.nrsc.gov.in>**